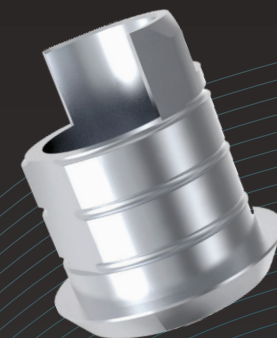
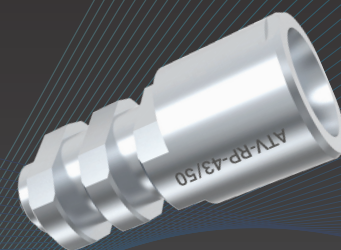
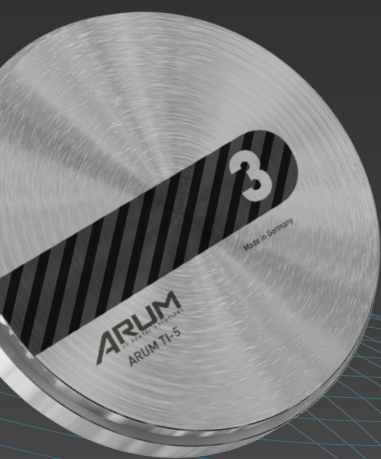


ARUM 

Compatible Implant Library for

- Premill & Disk milling
- Ti-base
- Analog



exocad library

ADIN® MULTI



Pre-mill & Disk



Analog

| Library Group | ARUM 3D Dental Solutions ADI-MULTI | | |
|-----------------|------------------------------------|-----------|---|
| Library Kit No. | MULTI | ADI-MULTI | ✓ |

ADIN® TOUAREG CLOSEFIT™



Pre-mill & Disk



Ti-base



Analog

| Library Group | ARUM 3D Dental Solutions ADI-CLF | ARUM 3D Dental Solutions-Ti Base ADI-CLF | | |
|-----------------|----------------------------------|--|--------------------------------|---|
| Library Kit No. | 3.0 H | ADI-TOU-CLF-3.0-H | Ti-Base-ADI-TOU-CLF-3.0-H | ✓ |
| | 3.0 NH | ADI-TOU-CLF-3.0-NH | Ti-Base-ADI-TOU-CLF-3.0-NH | ✓ |
| | 3.5 H | ADI-TOU-CLF-3.5-H | Ti-Base-ADI-TOU-CLF-3.5-H | ✓ |
| | 3.5 NH | ADI-TOU-CLF-3.5-NH | Ti-Base-ADI-TOU-CLF-3.5-NH | ✓ |
| | 4.3/5.0 H | ADI-TOU-CLF-4.3_5.0-H | Ti-Base-ADI-TOU-CLF-4.3_5.0-H | ✓ |
| | 4.3/5.0 NH | ADI-TOU-CLF-4.3_5.0-NH | Ti-Base-ADI-TOU-CLF-4.3_5.0-NH | ✓ |

ADIN® TOUAREG™ S&OS&SWELL



Pre-mill & Disk



Ti-base



Analog

| Library Group | ARUM 3D Dental Solutions ADI-S-OS-SWE | ARUM 3D Dental Solutions-Ti Base ADI-S-OS-SWE | | |
|-----------------|---------------------------------------|---|--|---|
| Library Kit No. | 3.5/3.75/4.2/5.0/6.0 (H) | ADI-TOU-S-OS-SWE-3.5_3.75_4.2_5.0_6.0-H | Ti-Base-ADI-TOU-S-OS-SWE-3.5_3.75_4.2_5.0_6.0-H | ✓ |
| | 3.5/3.75/4.2/5.0/6.0 (NH) | ADI-TOU-S-OS-SWE-3.5_3.75_4.2_5.0_6.0-NH | Ti-Base-ADI-TOU-S-OS-SWE-3.5_3.75_4.2_5.0_6.0-NH | ✓ |

ALPHA BIOTEC® Conical



Pre-mill & Disk

| Library Group | ARUM 3D Dental Solutions ALP-CON | | |
|-----------------|----------------------------------|----------------------------|--|
| Library Kit No. | Narrow 3.2/3.25/3.5 (H) | ALP-CON-NA-3.2_3.25_3.5-H | |
| | Narrow 3.2/3.25/3.5 (NH) | ALP-CON-NA-3.2_3.25_3.5-NH | |
| | Standard 3.75/4.2/5.0 (H) | ALP-CON-ST-3.75_4.2_5.0-H | |
| | Standard 3.75/4.2/5.0 (NH) | ALP-CON-ST-3.75_4.2_5.0-NH | |

ALPHA BIOTEC® Internal Hex



Pre-mill & Disk



Ti-base



Analog

| Library Group | ARUM 3D Dental Solutions ALP-INT | ARUM 3D Dental Solutions-Ti Base ALP-INT | | |
|-----------------|----------------------------------|--|-------------------------------------|---|
| Library Kit No. | 3.75/4.2/5.0/6.0 (H) | ALP-INT-3.75_4.2_5.0_6.0-H | Ti-Base-ALP-INT-3.75_4.2_5.0_6.0-H | ✓ |
| | 3.75/4.2/5.0/6.0 (NH) | ALP-INT-3.75_4.2_5.0_6.0-NH | Ti-Base-ALP-INT-3.75_4.2_5.0_6.0-NH | ✓ |

ALPHA BIOTEC® TCT-N MULTI



Pre-mill & Disk

| Library Group | ARUM 3D Dental Solutions ALP-TCT-N-MULTI | | |
|-----------------|--|-----------------|--|
| Library Kit No. | MULTI | ALP-TCT-N-MULTI | |

ANTHOGRYR® ANTHOFIT OI



Pre-mill & Disk

| Library Group | ARUM 3D Dental Solutions ANT-ANFIT | | |
|-----------------|------------------------------------|----------------------|--|
| Library Kit No. | D3.5 (H) | ANT-ANFIT-OI-D3.5-H | |
| | D3.5 (NH) | ANT-ANFIT-OI-D3.5-NH | |
| | D4.0 (H) | ANT-ANFIT-OI-D4.0-H | |
| | D4.0 (NH) | ANT-ANFIT-OI-D4.0-NH | |
| | D5.0 (H) | ANT-ANFIT-OI-D5.0-H | |
| | D5.0 (NH) | ANT-ANFIT-OI-D5.0-NH | |

ANTHOGRYR® AXIOM



Pre-mill & Disk



Ti-base



Analog

| Library Group | ARUM 3D Dental Solutions ANT-AXIOM | ARUM 3D Dental Solutions-Ti Base ANT-AXIOM | | |
|-----------------|------------------------------------|--|----------------------|---|
| Library Kit No. | H | ANT-AXIOM-H | Ti-Base-ANT-AXIOM-H | ✓ |
| | NH | ANT-AXIOM-NH | Ti-Base-ANT-AXIOM-NH | ✓ |

ANTHOGRYR® AXIOM MULTI



Pre-mill & Disk

| Library Group | ARUM 3D Dental Solutions ANT-AXIOM-MULTI | | |
|-----------------|--|-------------------------|--|
| Library Kit No. | CON 40 | ANT-AXIOM-CON-4.0-MULTI | |
| | MU 48 | ANT-AXIOM-4.8-MULTI | |

ASTRA TECH™ ANGLED



Pre-mill & Disk

| Library Group | ARUM 3D Dental Solutions AST-ANG-TCA-MULTI | | |
|-----------------|--|-------------------|--|
| Library Kit No. | TCA | AST-ANG-TCA-MULTI | |

ASTRA TECH™ EV™



Pre-mill & Disk



Ti-base



Analog

| Library Group | ARUM 3D Dental Solutions AST-EV | ARUM 3D Dental Solutions-Ti Base AST-EV | | |
|-----------------|---------------------------------|---|-----------------------|---|
| Library Kit No. | 3.0 H | AST-EV-3.0-H | Ti-Base-AST-EV-3.0-H | ✓ |
| | 3.0 NH | AST-EV-3.0-NH | Ti-Base-AST-EV-3.0-NH | ✓ |
| | 3.6 H | AST-EV-3.6-H | Ti-Base-AST-EV-3.6-H | ✓ |
| | 3.6 NH | AST-EV-3.6-NH | Ti-Base-AST-EV-3.6-NH | ✓ |
| | 4.2 H | AST-EV-4.2-H | Ti-Base-AST-EV-4.2-H | ✓ |
| | 4.2 NH | AST-EV-4.2-NH | Ti-Base-AST-EV-4.2-NH | ✓ |
| | 4.8 H | AST-EV-4.8-H | Ti-Base-AST-EV-4.8-H | ✓ |
| | 4.8 NH | AST-EV-4.8-NH | Ti-Base-AST-EV-4.8-NH | ✓ |
| | 5.4 H | AST-EV-5.4-H | Ti-Base-AST-EV-5.4-H | ✓ |
| | 5.4 NH | AST-EV-5.4-NH | Ti-Base-AST-EV-5.4-NH | ✓ |

ASTRA TECH™ EV MULTI BASE



Pre-mill & Disk

| Library Group | | ARUM 3D Dental Solutions AST-EV-BASE-MULTI |
|-----------------|------------|--|
| Library Kit No. | MULTI BASE | AST-EV-BASE-MULTI |

ASTRA TECH™ EV™ PROFILE



Pre-mill & Disk

| Library Group | | ARUM 3D Dental Solutions AST-EV-PRO |
|-----------------|----------|-------------------------------------|
| Library Kit No. | 4.2 (H) | AST-EVPRO-4.2-H |
| | 4.2 (NH) | AST-EVPRO-4.2-NH |
| | 4.8 (H) | AST-EVPRO-4.8-H |
| | 4.8 (NH) | AST-EVPRO-4.8-NH |

ASTRA TECH™ MULTI



Pre-mill & Disk

| Library Group | | ARUM 3D Dental Solutions AST-UNI-MULTI |
|-----------------|----------|--|
| Library Kit No. | UNI20 | AST-UNI20-MULTI |
| | UNI45 | AST-UNI45-MULTI |
| | EV UNI30 | AST-EV-UNI30-MULTI |

ASTRA TECH™ OsseoSpeed™



Pre-mill & Disk



Ti-base



Analog

| Library Group | | ARUM 3D Dental Solutions AST-OSS | ARUM 3D Dental Solutions-Ti Base AST-OSS | |
|-----------------|--------------------|----------------------------------|--|---|
| Library Kit No. | Yellow 3.0 (H) | AST-YEL-3.0-H | Ti-Base-AST-YEL-3.0-H | ✓ |
| | Yellow 3.0 (NH) | AST-YEL-3.0-NH | Ti-Base-AST-YEL-3.0-NH | ✓ |
| | Aqua 3.5/4.0 (H) | AST-AQU-3.5_4.0-H | Ti-Base-AST-AQU-3.5_4.0-H | ✓ |
| | Aqua 3.5/4.0 (NH) | AST-AQU-3.5_4.0-NH | Ti-Base-AST-AQU-3.5_4.0-NH | ✓ |
| | Lilac 4.5/5.0 (H) | AST-LIL-4.5_5.0-H | Ti-Base-AST-LIL-4.5_5.0-H | ✓ |
| | Lilac 4.5/5.0 (NH) | AST-LIL-4.5_5.0-NH | Ti-Base-AST-LIL-4.5_5.0-NH | ✓ |

AVINENT® OCEAN



Pre-mill & Disk



Analog

| Library Group | | ARUM 3D Dental Solutions AVI-OCE |
|-----------------|------------|----------------------------------|
| Library Kit No. | OCEAN (H) | AVI-OCE-H |
| | OCEAN (NH) | AVI-OCE-NH |

B&B DENTAL Conexa



Pre-mill & Disk

| Library Group | | ARUM 3D Dental Solutions B-B-CON |
|-----------------|--------------------------------------|--|
| Library Kit No. | 3.5/4.0/4.5/5.0/5.5/6.0/6.5/7.0 (H) | B-B-DEN-CON-3.5_4.0_4.5_5.0_5.5_6.0_6.5_7.0-H |
| | 3.5/4.0/4.5/5.0/5.5/6.0/6.5/7.0 (NH) | B-B-DEN-CON-3.5_4.0_4.5_5.0_5.5_6.0_6.5_7.0-NH |

B&B DENTAL MULTI



Pre-mill & Disk

| Library Group | | ARUM 3D Dental Solutions B-B-MULTI |
|-----------------|-------|------------------------------------|
| Library Kit No. | MULTI | B-B-MULTI |

BEGO®



Pre-mill & Disk



Ti-base



Analog

| Library Group | | ARUM 3D Dental Solutions BEG | ARUM 3D Dental Solutions-Ti Base BEG | |
|-----------------|----------------|------------------------------|--------------------------------------|---|
| Library Kit No. | 3.25/3.75 (H) | BEG-3.25_3.75-H | Ti-Base-BEG-3.25_3.75-H | ✓ |
| | 3.25/3.75 (NH) | BEG-3.25_3.75-NH | Ti-Base-BEG-3.25_3.75-NH | ✓ |
| | 4.1 (H) | BEG-4.1-H | Ti-Base-BEG-4.1-H | ✓ |
| | 4.1 (NH) | BEG-4.1-NH | Ti-Base-BEG-4.1-NH | ✓ |
| | 4.5 (H) | BEG-4.5-H | Ti-Base-BEG-4.5-H | ✓ |
| | 4.5 (NH) | BEG-4.5-NH | Ti-Base-BEG-4.5-NH | ✓ |
| | 5.5 (H) | BEG-5.5-H | Ti-Base-BEG-5.5-H | ✓ |
| | 5.5 (NH) | BEG-5.5-NH | Ti-Base-BEG-5.5-NH | ✓ |

BEGO® MULTI UNIT



Pre-mill & Disk

| Library Group | | ARUM 3D Dental Solutions BEG-MULTI |
|-----------------|-------|------------------------------------|
| Library Kit No. | MULTI | BEG-MULTI |

BICON®



Pre-mill & Disk



Ti-base



Analog

| Library Group | | ARUM 3D Dental Solutions BI-CON | ARUM 3D Dental Solutions-Ti Base BI-CON | |
|-----------------|-----|---------------------------------|---|---|
| Library Kit No. | 2.0 | BI-CON-2.0 | Ti-Base-BI-CON-2.0 | ✓ |
| | 2.5 | BI-CON-2.5 | Ti-Base-BI-CON-2.5 | ✓ |
| | 3.0 | BI-CON-3.0 | Ti-Base-BI-CON-3.0 | ✓ |

BIO3 CONICAL



Pre-mill & Disk

| Library Group | | ARUM 3D Dental Solutions BIO-3-CON |
|-----------------|---------------|------------------------------------|
| Library Kit No. | Standard (H) | BIO-3-CON-ST-H |
| | Standard (NH) | BIO-3-CON-ST-NH |
| | Wide (H) | BIO-3-CON-W-H |
| | Wide (NH) | BIO-3-CON-W-NH |

BIO COMP DENTAL



Pre-mill & Disk

| Library Group | | ARUM 3D Dental Solutions BIO-COMP-MULTI |
|-----------------|-----------|---|
| Library Kit No. | MULTI 4.0 | BIO-COMP-4.0-MULTI |

BIOHORIZONS® External®



| Library Group | ARUM 3D Dental Solutions BIO-HOR-EXT | ARUM 3D Dental Solutions-Ti Base BIO-HOR-EXT | Analog | |
|-----------------|--------------------------------------|--|----------------------------|---|
| Library Kit No. | 3.5 (H) | BIO-HOR-EXT-3.5-H | Ti-Base-BBIO-HOR-EXT-3.5-H | ✓ |
| | 3.5 (NH) | BIO-HOR-EXT-3.5-NH | Ti-Base-BIO-HOR-EXT-3.5-NH | ✓ |
| | 4.0 (H) | BIO-HOR-EXT-4.0-H | Ti-Base-BIO-HOR-EXT-4.0-H | ✓ |
| | 4.0 (NH) | BIO-HOR-EXT-4.0-NH | Ti-Base-BIO-HOR-EXT-4.0-NH | ✓ |
| | 5.0 (H) | BIO-HOR-EXT-5.0-H | Ti-Base-BIO-HOR-EXT-5.0-H | ✓ |
| | 5.0 (NH) | BIO-HOR-EXT-5.0-NH | Ti-Base-BIO-HOR-EXT-5.0-NH | ✓ |
| | 6.0 (H) | BIO-HOR-EXT-6.0-H | Ti-Base-BIO-HOR-EXT-6.0-H | ✓ |
| | 6.0 (NH) | BIO-HOR-EXT-6.0-NH | Ti-Base-BIO-HOR-EXT-6.0-NH | ✓ |

BIOMET 3i® External®



| Library Group | ARUM 3D Dental Solutions BIO-3i-EXT | ARUM 3D Dental Solutions-Ti Base BIO-3i-EXT | Analog | |
|-----------------|-------------------------------------|---|-----------------------------|---|
| Library Kit No. | M (H) | BIO-3i-EXT-M-3.4-H | Ti-Base-BIO-3i-EXT-M-3.4-H | ✓ |
| | M (NH) | BIO-3i-EXT-M-3.4-NH | Ti-Base-BIO-3i-EXT-M-3.4-NH | ✓ |
| | R (H) | BIO-3i-EXT-R-4.1-H | Ti-Base-BIO-3i-EXT-R-4.1-H | ✓ |
| | R (NH) | BIO-3i-EXT-R-4.1-NH | Ti-Base-BIO-3i-EXT-R-4.1-NH | ✓ |
| | W (H) | BIO-3i-EXT-W-5.0-H | Ti-Base-BIO-3i-EXT-W-5.0-H | ✓ |
| | W (NH) | BIO-3i-EXT-W-5.0-NH | Ti-Base-BIO-3i-EXT-W-5.0-NH | ✓ |
| | XW (H) | BIO-3i-EXT-XW-6.0-H | | |
| | XW (NH) | BIO-3i-EXT-XW-6.0-NH | | |

BIOHORIZONS® Internal®



| Library Group | ARUM 3D Dental Solutions BIO-HOR-INT | ARUM 3D Dental Solutions-Ti Base BIO-HOR-INT | Analog | |
|-----------------|--------------------------------------|--|----------------------------|---|
| Library Kit No. | 3.0 (H) | BIO-HOR-INT-3.0-H | Ti-Base-BIO-HOR-INT-3.0-H | ✓ |
| | 3.0 (NH) | BIO-HOR-INT-3.0-NH | Ti-Base-BIO-HOR-INT-3.0-NH | ✓ |
| | 3.5 (H) | BIO-HOR-INT-3.5-H | Ti-Base-BIO-HOR-INT-3.5-H | ✓ |
| | 3.5 (NH) | BIO-HOR-INT-3.5-NH | Ti-Base-BIO-HOR-INT-3.5-NH | ✓ |
| | 4.5 (H) | BIO-HOR-INT-4.5-H | Ti-Base-BIO-HOR-INT-4.5-H | ✓ |
| | 4.5 (NH) | BIO-HOR-INT-4.5-NH | Ti-Base-BIO-HOR-INT-4.5-NH | ✓ |
| | 5.7 (H) | BIO-HOR-INT-5.7-H | Ti-Base-BIO-HOR-INT-5.7-H | ✓ |
| | 5.7 (NH) | BIO-HOR-INT-5.7-NH | Ti-Base-BIO-HOR-INT-5.7-NH | ✓ |

BIOMET 3i® MULTI



| Library Group | ARUM 3D Dental Solutions BIO-3i-MULTI |
|-----------------|---------------------------------------|
| Library Kit No. | MULTI |

BIONER IMPLANT



| Library Group | ARUM 3D Dental Solutions BIONE-IMP | |
|-----------------|------------------------------------|--------------------------|
| Library Kit No. | 3.5/4.0/5.0 (H) | BIONE-IMP-3.5_4.0_5.0-H |
| | 3.5/4.0/5.0 (NH) | BIONE-IMP-3.5_4.0_5.0-NH |

BIOHORIZONS® MULTI



| Library Group | ARUM 3D Dental Solutions BIO-HOR-MULTI |
|-----------------|--|
| Library Kit No. | MULTI |

BIOTECH® BIS Octagone Internal



| Library Group | ARUM 3D Dental Solutions BIOTEC-BIS-INT | |
|-----------------|---|-----------------------|
| Library Kit No. | 3.9 (H) | BIOTEC-BIS-INT-3.9-H |
| | 3.9 (NH) | BIOTEC-BIS-INT-3.9-NH |
| | 4.4 (H) | BIOTEC-BIS-INT-4.4-H |
| | 4.4 (NH) | BIOTEC-BIS-INT-4.4-NH |
| | 5.4 (H) | BIOTEC-BIS-INT-5.4-H |
| | 5.4 (NH) | BIOTEC-BIS-INT-5.4-NH |

BIOMET 3i® Certain®



| Library Group | ARUM 3D Dental Solutions BIO-3i-CER | ARUM 3D Dental Solutions-Ti Base BIO-3i-CER | Analog | |
|-----------------|-------------------------------------|---|---------------------------|---|
| Library Kit No. | 3.4 (H) | BIO-3i-CER-3.4-H | Ti-Base-BIO-3i-CER-3.4-H | ✓ |
| | 3.4 (NH) | BIO-3i-CER-3.4-NH | Ti-Base-BIO-3i-CER-3.4-NH | ✓ |
| | 4.1 (H) | BIO-3i-CER-4.1-H | Ti-Base-BIO-3i-CER-4.1-H | ✓ |
| | 4.1 (NH) | BIO-3i-CER-4.1-NH | Ti-Base-BIO-3i-CER-4.1-NH | ✓ |
| | 5.0 (H) | BIO-3i-CER-5.0-H | Ti-Base-BIO-3i-CER-5.0-H | ✓ |
| | 5.0 (NH) | BIO-3i-CER-5.0-NH | Ti-Base-BIO-3i-CER-5.0-NH | ✓ |
| | 6.0 (H) | BIO-3i-CER-6.0-H | Ti-Base-BIO-3i-CER-6.0-H | ✓ |
| | 6.0 (NH) | BIO-3i-CER-6.0-NH | Ti-Base-BIO-3i-CER-6.0-NH | ✓ |

BIOTECH® Kontakt



| Library Group | ARUM 3D Dental Solutions BIOTEC-KON | ARUM 3D Dental Solutions-Ti Base BIOTEC-KON | Analog | |
|-----------------|-------------------------------------|---|-----------------------|---|
| Library Kit No. | 3.0 (H) | BIOTEC-KON-3.0-H | ✓ | |
| | 3.0 (NH) | BIOTEC-KON-3.0-NH | ✓ | |
| | 3.6/4.2/4.8/5.4 (H) | BIOTEC-KON-3.6_4.2_4.8_5.4-H | Ti-Base-BIOTEC-KON-H | ✓ |
| | 3.6/4.2/4.8/5.4 (NH) | BIOTEC-KON-3.6_4.2_4.8_5.4-NH | Ti-Base-BIOTEC-KON-NH | ✓ |

BIOTECH® MULTI



Pre-mill & Disk

| Library Group | | ARUM 3D Dental Solutions BIOTEC-MULTI |
|-----------------|-------|---------------------------------------|
| Library Kit No. | MULTI | BIOTEC-MULTI |

BrainBase Corporatio MYTIS Arrow Implant



Pre-mill & Disk

| Library Group | | ARUM 3D Dental Solutions BRA-MYT |
|-----------------|--------------|----------------------------------|
| Library Kit No. | B Type (H) | BRA-MYT-B-TYPE-H |
| | B Type (NH) | BRA-MYT-B-TYPE-NH |
| | C Type (H) | BRA-MYT-C-TYPE-H |
| | C Type (NH) | BRA-MYT-C-TYPE-NH |
| | E Type (H) | BRA-MYT-E-TYPE-H |
| | E Type (NH) | BRA-MYT-E-TYPE-NH |
| | EW Type (H) | BRA-MYT-EW-TYPE-H |
| | EW Type (NH) | BRA-MYT-EW-TYPE-NH |

BRENT Medical SKY®



Pre-mill & Disk



Ti-base



Analog

| Library Group | | ARUM 3D Dental Solutions BRE-SKY | ARUM 3D Dental Solutions-Ti Base BRE-SKY | |
|-----------------|------------|----------------------------------|--|---|
| Library Kit No. | MINI2 (H) | BRE-SKY-MINI2-H | ✓ | |
| | MINI2 (NH) | BRE-SKY-MINI2-NH | Ti-Base-BRE-SKY-MINI2-NH | ✓ |
| | 3.5 (H) | BRE-SKY-3.5-H | Ti-Base-BRE-SKY-3.5-H | ✓ |
| | 3.5 (NH) | BRE-SKY-3.5-NH | Ti-Base-BRE-SKY-3.5-NH | ✓ |
| | 4.0 (H) | BRE-SKY-4.0-H | Ti-Base-BRE-SKY-4.0-H | ✓ |
| | 4.0 (NH) | BRE-SKY-4.0-NH | Ti-Base-BRE-SKY-4.0-NH | ✓ |

BRENT Medical SKY® MULTI



Pre-mill & Disk

| Library Group | | ARUM 3D Dental Solutions BRE-SKY-MULTI |
|-----------------|-------------|--|
| Library Kit No. | UNI_CON | BRE-SKY-UNI-CON-MULTI |
| | FAST&FINDEX | BRE-SKY-FAST&FINDEX-MULTI |



Pre-mill & Disk



Analog

| Library Group | | ARUM 3D Dental Solutions BT-I-EXT | |
|-----------------|----------|-----------------------------------|---|
| Library Kit No. | 3.5 (H) | BT-I-EXT-3.5-H | |
| | 3.5 (NH) | BT-I-EXT-3.5-NH | |
| | 4.1 (H) | BT-I-EXT-4.1-H | ✓ |
| | 4.1 (NH) | BT-I-EXT-4.1-NH | ✓ |
| | 5.5 (H) | BT-I-EXT-5.5-H | |
| | 5.5 (NH) | BT-I-EXT-5.5-NH | |

BTI® INTERNA



Pre-mill & Disk



Analog

| Library Group | | ARUM 3D Dental Solutions BT-I-INT | |
|-----------------|----------|-----------------------------------|---|
| Library Kit No. | 3.5 (H) | BT-I-INT-3.5-H | ✓ |
| | 3.5 (NH) | BT-I-INT-3.5-NH | ✓ |
| | 4.1 (H) | BT-I-INT-4.1-H | ✓ |
| | 4.1 (NH) | BT-I-INT-4.1-NH | ✓ |
| | 5.5 (H) | BT-I-INT-5.5-H | ✓ |
| | 5.5 (NH) | BT-I-INT-5.5-NH | ✓ |

BTI® MULTI



Pre-mill & Disk



Analog

| Library Group | | ARUM 3D Dental Solutions BT-I-MULTI | |
|-----------------|------------------------|-------------------------------------|---|
| Library Kit No. | 3.5 | BT-I-3.5-MULTI | |
| | 4.1 | BT-I-4.1-MULTI | ✓ |
| | 5.5 | BT-I-5.5-MULTI | ✓ |
| | 5.0 (ANGLED CONVERTER) | BT-I-5.0-ANG-MULTI | |

BTK® MULTI



Pre-mill & Disk

| Library Group | | ARUM 3D Dental Solutions BT-K-MULTI |
|-----------------|-------|-------------------------------------|
| Library Kit No. | MULTI | BT-K-MULTI |

CAMLOG®



Pre-mill & Disk



Ti-base



Analog

| Library Group | | ARUM 3D Dental Solutions CAM | ARUM 3D Dental Solutions-Ti Base CAM | |
|-----------------|----------|------------------------------|--------------------------------------|---|
| Library Kit No. | 3.3 (H) | CAM-3.3-H | Ti-Base-CAM-3.3-H | ✓ |
| | 3.3 (NH) | CAM-3.3-NH | Ti-Base-CAM-3.3-NH | ✓ |
| | 3.8 (H) | CAM-3.8-H | Ti-Base-CAM-3.8-H | ✓ |
| | 3.8 (NH) | CAM-3.8-NH | Ti-Base-CAM-3.8-NH | ✓ |
| | 4.3 (H) | CAM-4.3-H | Ti-Base-CAM-4.3-H | ✓ |
| | 4.3 (NH) | CAM-4.3-NH | Ti-Base-CAM-4.3-NH | ✓ |
| | 5.0 (H) | CAM-5.0-H | Ti-Base-CAM-5.0-H | ✓ |
| | 5.0 (NH) | CAM-5.0-NH | Ti-Base-CAM-5.0-NH | ✓ |

CAMLOG® CAMLOG MULTI



Pre-mill & Disk



Analog

| Library Group | | ARUM 3D Dental Solutions CAM-MULTI | |
|-----------------|-------------------|------------------------------------|---|
| Library Kit No. | 3.3/3.8/4.3 MULTI | CAM-3.3_3.8_4.3-MULTI | ✓ |
| | 5.0/6.0 MULTI | CAM-5.0_6.0-MULTI | ✓ |

CAMLOG® CONELOG



| Library Group | ARUM 3D Dental Solutions CON | | ARUM 3D Dental Solutions-Ti Base CON | Analog |
|-----------------|------------------------------|------------|--------------------------------------|--------|
| Library Kit No. | 3.3 (H) | CON-3.3-H | Ti-Base-CON-3.3-H | ✓ |
| | 3.3 (NH) | CON-3.3-NH | Ti-Base-CON-3.3-NH | ✓ |
| | 3.8 (H) | CON-3.8-H | Ti-Base-CON-3.8-H | ✓ |
| | 3.8 (NH) | CON-3.8-NH | Ti-Base-CON-3.8-NH | ✓ |
| | 4.3 (H) | CON-4.3-H | Ti-Base-CON-4.3-H | ✓ |
| | 4.3 (NH) | CON-4.3-NH | Ti-Base-CON-4.3-NH | ✓ |
| | 5.0 (H) | CON-5.0-H | Ti-Base-CON-5.0-H | ✓ |
| | 5.0 (NH) | CON-5.0-NH | Ti-Base-CON-5.0-NH | ✓ |

CAMLOG® CONELOG MULTI



| Library Group | ARUM 3D Dental Solutions CON-MULTI | | Analog |
|-----------------|------------------------------------|-----------------------|--------|
| Library Kit No. | 3.3/3.8/4.3 MULTI | CON-3.3_3.8_4.3-MULTI | ✓ |
| | 5.0/6.0 MULTI | CON-5.0_6.0-MULTI | ✓ |

CLC SCIENTIFIC® CLC CONIC™



| Library Group | ARUM 3D Dental Solutions CL-C-CON | | Analog |
|-----------------|-----------------------------------|-------------|--------|
| Library Kit No. | H | CL-C-CON-H | |
| | NH | CL-C-CON-NH | |

CONEXAO® HI(hexagono Interno)



| Library Group | ARUM 3D Dental Solutions CONXAO-HI | | Analog |
|-----------------|------------------------------------|------------------|--------|
| Library Kit No. | 4.1 (H) | CONXAO-HI-4.1-H | |
| | 4.1 (NH) | CONXAO-HI-4.1-NH | |

CORTEX®



| Library Group | ARUM 3D Dental Solutions COR | ARUM 3D Dental Solutions-Ti Base COR | Analog | |
|-----------------|------------------------------|--------------------------------------|-------------------|---|
| Library Kit No. | 3.8 (H) | COR-3.8-H | Ti-Base-COR-3.8-H | ✓ |
| | 3.8 (NH) | COR-3.8-NH | | ✓ |

CORTEX® MULTI



| Library Group | ARUM 3D Dental Solutions COR-MULTI | | Analog |
|-----------------|------------------------------------|-----------|--------|
| Library Kit No. | MULTI | COR-MULTI | |

COWELLMEDI® INNO Internal



| Library Group | ARUM 3D Dental Solutions COWEL-INT | | ARUM 3D Dental Solutions-Ti Base COWEL-INT | Analog |
|-----------------|------------------------------------|--------------|--|--------|
| Library Kit No. | H | COWEL-INT-H | Ti-Base-COWEL-INT-H | ✓ |
| | NH | COWEL-INT-NH | Ti-Base-COWEL-INT-NH | ✓ |

C-TECH® Esthetic Line/Bone level



| Library Group | ARUM 3D Dental Solutions C-TEC-EST | | ARUM 3D Dental Solutions-Ti Base C-TEC-EST | Analog |
|-----------------|------------------------------------|--------------|--|--------|
| Library Kit No. | H | C-TEC-EST-H | Ti-Base-C-TEC-EST-H | ✓ |
| | NH | C-TEC-EST-NH | Ti-Base-C-TEC-EST-NH | ✓ |

C-TECH® MULTI



| Library Group | ARUM 3D Dental Solutions C-TEC-MULTI | | Analog |
|-----------------|--------------------------------------|-------------|--------|
| Library Kit No. | MULTI | C-TEC-MULTI | |

DEEP®



| Library Group | ARUM 3D Dental Solutions DEP | | Analog |
|-----------------|------------------------------|------------|--------|
| Library Kit No. | 3.8 (H) | DEP-3.8-H | ✓ |
| | 3.8 (NH) | DEP-3.8-NH | ✓ |
| | 4.5 (H) | DEP-4.5-H | ✓ |
| | 4.5 (NH) | DEP-4.5-NH | ✓ |

DENTAURUM tioLogic®



| Library Group | ARUM 3D Dental Solutions DENTA-TIO | | Analog |
|-----------------|------------------------------------|----------------------|--------|
| Library Kit No. | 3.3 (H) | DENTA-TIO-3.3-H | |
| | 3.3 (NH) | DENTA-TIO-3.3-NH | |
| | 3.7/4.2 (H) | DENTA-TIO-3.7_4.2-H | |
| | 3.7/4.2 (NH) | DENTA-TIO-3.7_4.2-NH | |
| | 4.8/5.5 (H) | DENTA-TIO-4.8_5.5-H | |
| | 4.8/5.5 (NH) | DENTA-TIO-4.8_5.5-NH | |

DENTIS® i-clean



| Library Group | ARUM 3D Dental Solutions DEN-TIS-I-CLEAN | ARUM 3D Dental Solutions-Ti Base DEN-TIS-I-CLEAN | Analog | |
|-----------------|--|--|--------------------------------|---|
| Library Kit No. | 4.8 (H) | DEN-TIS-I-CLEAN-4.8-H | Ti-Base-DEN-TIS-I-CLEAN-4.8-H | ✓ |
| | 4.8 (NH) | DEN-TIS-I-CLEAN-4.8-NH | Ti-Base-DEN-TIS-I-CLEAN-4.8-NH | ✓ |
| | 6.5 (H) | DEN-TIS-I-CLEAN-6.5-H | Ti-Base-DEN-TIS-I-CLEAN-6.5-H | ✓ |
| | 6.5 (NH) | DEN-TIS-I-CLEAN-6.5-NH | Ti-Base-DEN-TIS-I-CLEAN-6.5-NH | ✓ |

DENTIS® MULTI



Pre-mill & Disk

| Library Group | ARUM 3D Dental Solutions DEN-TIS-MULTI | |
|-----------------|--|---------------|
| Library Kit No. | MULTI | DEN-TIS-MULTI |

DENTIS® save



Pre-mill & Disk

| Library Group | ARUM 3D Dental Solutions DEN-TIS-SAVE | |
|-----------------|---------------------------------------|---------------------|
| Library Kit No. | 4.8 (H) | DEN-TIS-SAVE-4.8-H |
| | 4.8 (NH) | DEN-TIS-SAVE-4.8-NH |
| | 6.0 (H) | DEN-TIS-SAVE-6.0-H |
| | 6.0 (NH) | DEN-TIS-SAVE-6.0-NH |

DENTIS® s-clean



Pre-mill & Disk



Ti-base



Analog

| Library Group | ARUM 3D Dental Solutions DEN-TIS-S-CLEAN | ARUM 3D Dental Solutions-Ti Base DEN-TIS-S-CLEAN | | |
|-----------------|--|--|--------------------------------|---|
| Library Kit No. | Narrow (H) | DEN-TIS-S-CLEAN-N-H | Ti-Base-DEN-TIS-S-CLEAN-N-H | ✓ |
| | Narrow (NH) | DEN-TIS-S-CLEAN-N-NH | Ti-Base-DEN-TIS-S-CLEAN-N-NH | ✓ |
| | Regular/Wide (H) | DEN-TIS-S-CLEAN-R-W-H | Ti-Base-DEN-TIS-S-CLEAN-R-W-H | ✓ |
| | Regular/Wide (NH) | DEN-TIS-S-CLEAN-R-W-NH | Ti-Base-DEN-TIS-S-CLEAN-R-W-NH | ✓ |

DENTIUM®



Pre-mill & Disk



Ti-base



Analog

| Library Group | ARUM 3D Dental Solutions DEN-TIUM | ARUM 3D Dental Solutions-Ti Base DEN-TIUM | | |
|-----------------|-----------------------------------|---|----------------------------------|---|
| Library Kit No. | NR Line NR (H) | DEN-TIUM-NR-LINE-H | Ti-Base-DEN-TIUM-NR-LINE-H | ✓ |
| | NR Line NR (NH) | DEN-TIUM-NR-LINE-NH | Ti-Base-DEN-TIUM-NR-LINE-NH | ✓ |
| | NR Line NR 3.6 (H) | DEN-TIUM-NR-LINE-3.6-H | Ti-Base-DEN-TIUM-NR-LINE-3.6-H | ✓ |
| | NR Line NR 3.6 (NH) | DEN-TIUM-NR-LINE-3.6-NH | Ti-Base-DEN-TIUM-NR-LINE-3.6-NH | ✓ |
| | SuperLine (H) | DEN-TIUM-SUP-LINE-H | Ti-Base-DEN-TIUM-SUP-LINE-H | ✓ |
| | SuperLine (NH) | DEN-TIUM-SUP-LINE-NH | Ti-Base-DEN-TIUM-SUP-LINE-NH | ✓ |
| | SimpleLine 4.8 (H) | DEN-TIUM-SIM-LINE-4.8-H | Ti-Base-DEN-TIUM-SIM-LINE-4.8-H | ✓ |
| | SimpleLine 4.8 (NH) | DEN-TIUM-SIM-LINE-4.8-NH | Ti-Base-DEN-TIUM-SIM-LINE-4.8-NH | ✓ |
| | SimpleLine 6.5 (H) | DEN-TIUM-SIM-LINE-6.5-H | Ti-Base-DEN-TIUM-SIM-LINE-6.5-H | ✓ |
| | SimpleLine 6.5 (NH) | DEN-TIUM-SIM-LINE-6.5-NH | Ti-Base-DEN-TIUM-SIM-LINE-6.5-NH | ✓ |

DENTIUM® MULTI



Pre-mill & Disk



Analog

| Library Group | ARUM 3D Dental Solutions DEN-TIUM-MULTI | | |
|-----------------|---|--------------------|---|
| Library Kit No. | 4.5 | DEN-TIUM-4.5-MULTI | ✓ |
| | 5.5 | DEN-TIUM-5.5-MULTI | ✓ |

DENTSPLY® Ankylos® Balance



Pre-mill & Disk



Analog

| Library Group | ARUM 3D Dental Solutions DENTS-ANK-MULTI | | |
|-----------------|--|-------------------------|---|
| Library Kit No. | Base Narrow | DENTS-ANK-B-B-NAR-MULTI | ✓ |
| | Narrow | DENTS-ANK-B-B-MULTI | ✓ |

DENTSPLY® Ankylos® PILAR REGULAR



Pre-mill & Disk



Ti-base



Analog

| Library Group | ARUM 3D Dental Solutions DENTS-ANK-PILAR | ARUM 3D Dental Solutions-Ti Base DENTS-ANK-PILAR | | |
|-----------------|--|--|------------------------------------|---|
| Library Kit No. | 3.5 (H) | DENTS-ANK-PILAR-REG-3.5-H | Ti-Base-DENTS-ANK-PILAR-REG-3.5-H | ✓ |
| | 3.5 (NH) | DENTS-ANK-PILAR-REG-3.5-NH | Ti-Base-DENTS-ANK-PILAR-REG-3.5-NH | ✓ |
| | 4.5 (H) | DENTS-ANK-PILAR-REG-4.5-H | Ti-Base-DENTS-ANK-PILAR-REG-4.5-H | ✓ |
| | 4.5 (NH) | DENTS-ANK-PILAR-REG-4.5-NH | Ti-Base-DENTS-ANK-PILAR-REG-4.5-NH | ✓ |
| | 5.5 (H) | DENTS-ANK-PILAR-REG-5.5-H | Ti-Base-DENTS-ANK-PILAR-REG-5.5-H | ✓ |
| | 5.5 (NH) | DENTS-ANK-PILAR-REG-5.5-NH | Ti-Base-DENTS-ANK-PILAR-REG-5.5-NH | ✓ |
| | 7.0 (H) | DENTS-ANK-PILAR-REG-7.0-H | Ti-Base-DENTS-ANK-PILAR-REG-7.0-H | ✓ |
| | 7.0 (NH) | DENTS-ANK-PILAR-REG-7.0-NH | Ti-Base-DENTS-ANK-PILAR-REG-7.0-NH | ✓ |

DENTSPLY® Xive®



Pre-mill & Disk



Ti-base



Analog

| Library Group | ARUM 3D Dental Solutions DENTS-XIV | ARUM 3D Dental Solutions-Ti Base DENTS-XIV | | |
|-----------------|------------------------------------|--|--------------------------|---|
| Library Kit No. | 3.0 (H) | DENTS-XIV-3.0-H | Ti-Base-DENTS-XIV-3.0-H | ✓ |
| | 3.0 (NH) | DENTS-XIV-3.0-NH | Ti-Base-DENTS-XIV-3.0-NH | ✓ |
| | 3.4 (H) | DENTS-XIV-3.4-H | Ti-Base-DENTS-XIV-3.4-H | ✓ |
| | 3.4 (NH) | DENTS-XIV-3.4-NH | Ti-Base-DENTS-XIV-3.4-NH | ✓ |
| | 3.8 (H) | DENTS-XIV-3.8-H | Ti-Base-DENTS-XIV-3.8-H | ✓ |
| | 3.8 (NH) | DENTS-XIV-3.8-NH | Ti-Base-DENTS-XIV-3.8-NH | ✓ |
| | 4.5 (H) | DENTS-XIV-4.5-H | Ti-Base-DENTS-XIV-4.5-H | ✓ |
| | 4.5 (NH) | DENTS-XIV-4.5-NH | Ti-Base-DENTS-XIV-4.5-NH | ✓ |
| | 5.5 (H) | DENTS-XIV-5.5-H | Ti-Base-DENTS-XIV-5.5-H | ✓ |
| | 5.5 (NH) | DENTS-XIV-5.5-NH | Ti-Base-DENTS-XIV-5.5-NH | ✓ |

DENTSPLY® Xive® MULTI



Pre-mill & Disk

| Library Group | ARUM 3D Dental Solutions DENTS-XIV-MULTI | |
|-----------------|--|---------------------|
| Library Kit No. | 3.4 | DENTS-XIV-3.4-MULTI |
| | 3.8 | DENTS-XIV-3.8-MULTI |
| | 4.5 | DENTS-XIV-4.5-MULTI |
| | 5.5 | DENTS-XIV-5.5-MULTI |

DIO® SM



| Library Group | ARUM 3D Dental Solutions DI-O-SM | ARUM 3D Dental Solutions-Ti Base DI-O-SM | Analog | |
|-----------------|----------------------------------|--|-----------------------------------|---|
| Library Kit No. | Mini (H) | DI-O-SM-MINI-H | Ti-Base-DI-O-SM-MINI-H | ✓ |
| | Mini (NH) | DI-O-SM-MINI-NH | Ti-Base-DI-O-SM-MINI-NH | ✓ |
| | Regular/Wide/Extra Wide (H) | DI-O-SM-REG-WIDE-XWIDE-H | Ti-Base-DI-O-SM-REG-WIDE-XWIDE-H | ✓ |
| | Regular/Wide/Extra Wide (NH) | DI-O-SM-REG-WIDE-XWIDE-NH | Ti-Base-DI-O-SM-REG-WIDE-XWIDE-NH | ✓ |
| | AMI 4.8 (H) | DI-O-SM-AMI-4.8-H | | ✓ |
| | AMI 4.8 (NH) | DI-O-SM-AMI-4.8-NH | | ✓ |

DIO® UF



| Library Group | ARUM 3D Dental Solutions DI-O-UF | ARUM 3D Dental Solutions-Ti Base DI-O-UF | Analog | |
|-----------------|---|--|-----------------------------|---|
| Library Kit No. | Narrow (H) | DI-O-UF-NA-H | Ti-Base-DI-O-UF-NA-H | ✓ |
| | Narrow (NH) | DI-O-UF-NA-NH | Ti-Base-DI-O-UF-NA-NH | ✓ |
| | Regular/Wide (H) | DI-O-UF-REG-WIDE-H | Ti-Base-DI-O-UF-REG-WIDE-H | ✓ |
| | Regular/Wide (NH) | DI-O-UF-REG-WIDE-NH | Ti-Base-DI-O-UF-REG-WIDE-NH | ✓ |
| | Internal Non Submerged 3.6/4.0/4.5 (H) | DI-O-UF-INT-NON-SUB-3.6_4.0_4.5-H | | |
| | Internal Non Submerged 3.6/4.0/4.5 (NH) | DI-O-UF-INT-NON-SUB-3.6_4.0_4.5-NH | | |

DIO® UF MULTI



| Library Group | ARUM 3D Dental Solutions DI-O-UF-MULTI | Analog | |
|-----------------|--|-------------------|---|
| Library Kit No. | 4.8 | DI-O-UF-4.8-MULTI | ✓ |

DYNA® PUSHIN



| Library Group | ARUM 3D Dental Solutions DYN | ARUM 3D Dental Solutions-Ti Base DYN | Analog | |
|-----------------|------------------------------|--------------------------------------|----------------------|---|
| Library Kit No. | H | DYN-PUSHIN-H | Ti-Base-DYN-PUSHIN-H | ✓ |
| | NH | DYN-PUSHIN-NH | | ✓ |

EBI®



| Library Group | ARUM 3D Dental Solutions EB-I | Analog | |
|-----------------|-------------------------------|------------------|--|
| Library Kit No. | Octa ST (H) | EB-I-SUB-OCTA-ST | |
| | Octa C1 (H) | EB-I-SUB-OCTA-C1 | |
| | Octa C2 (H) | EB-I-SUB-OCTA-C2 | |
| | Octa C3 (H) | EB-I-SUB-OCTA-C3 | |
| | TL 4.8 (H) | EB-I-TL-4.8 | |

EDISON MEDICAL Clicq™



| Library Group | ARUM 3D Dental Solutions EDI-MED-MULTI | Analog | |
|-----------------|--|---------------|--|
| Library Kit No. | MULTI | EDI-MED-MULTI | |

EUROTEKNIKA AESTHETICA



| Library Group | ARUM 3D Dental Solutions EURO-AES | Analog | |
|-----------------|-----------------------------------|-----------------|---|
| Library Kit No. | 4.8 (H) | EURO-AES-4.8-H | ✓ |
| | 4.8 (NH) | EURO-AES-4.8-NH | ✓ |

EUROTEKNIKA INTERNAL Naturactis/Naturall+/Nateat+



| Library Group | ARUM 3D Dental Solutions EURO-INT | Analog | |
|-----------------|-----------------------------------|-----------------------------|--|
| Library Kit No. | 3.0 (H) | EURO-INT-3.0-H | |
| | 3.0 (NH) | EURO-INT-3.0-NH | |
| | 3.5/4.0/4.5/5.0 (H) | EURO-INT-3.5_4.0_4.5_5.0-H | |
| | 3.5/4.0/4.5/5.0 (NH) | EURO-INT-3.5_4.0_4.5_5.0-NH | |

EUROTEKNIKA MULTI



| Library Group | ARUM 3D Dental Solutions EURO-MULTI | Analog | |
|-----------------|-------------------------------------|----------------|---|
| Library Kit No. | 4.8 | EURO-4.8-MULTI | ✓ |

GC IMPLANT AADVA™



| Library Group | ARUM 3D Dental Solutions GC-AAD | Analog | |
|-----------------|---------------------------------|--------------|--|
| Library Kit No. | REGULAR (H) | GC-AAD-RP-H | |
| | REGULAR (NH) | GC-AAD-RP-NH | |

Global D® MULTI UNIT SYSTEM



| Library Group | ARUM 3D Dental Solutions GLO-D-MULTI | Analog | |
|-----------------|--------------------------------------|----------------------|--|
| Library Kit No. | STRAIGHT 4.3 | GLO-D-STR-D4.3-MULTI | |
| | ANGLED 4.7 | GLO-D-ANG-D4.7-MULTI | |

Global D® Tekka®



| Library Group | ARUM 3D Dental Solutions GLO-D | ARUM 3D Dental Solutions-Ti Base GLO-D | Analog | |
|-----------------|--------------------------------|--|------------------------|---|
| Library Kit No. | In-Kone (H) | GLO-D-TEKKA-H | Ti-Base-GLO-D-TEKKA-H | ✓ |
| | In-Kone (NH) | GLO-D-TEKKA-NH | Ti-Base-GLO-D-TEKKA-NH | ✓ |

HIOSEN® ET 3



| Library Group | ARUM 3D Dental Solutions HIOSEN-ET | | ARUM 3D Dental Solutions-Ti Base HIOSEN-ET | Analog | |
|-----------------|------------------------------------|--|--|-------------------------------------|---|
| Library Kit No. | Mini 3.5 (H) | | HIOSEN-ET-M-3.5-H | Ti-Base-HIOSEN-ET-M-3.5-H | ✓ |
| | Mini 3.5 (NH) | | HIOSEN-ET-M-3.5-NH | Ti-Base-HIOSEN-ET-M-3.5-NH | ✓ |
| | Standard 4.0/4.5/6.0 (H) | | HIOSEN-ET-ST-4.0_4.5_6.0-H | Ti-Base-HIOSEN-ET-ST-4.0_4.5_6.0-H | ✓ |
| | Standard 4.0/4.5/6.0 (NH) | | HIOSEN-ET-ST-4.0_4.5_6.0-NH | Ti-Base-HIOSEN-ET-ST-4.0_4.5_6.0-NH | ✓ |

HIOSEN® MULTI



| Library Group | ARUM 3D Dental Solutions HIOSEN-MULTI | |
|-----------------|---------------------------------------|----------------|
| Library Kit No. | M | HIOSEN-M-MULTI |
| | R | HIOSEN-R-MULTI |

HIOSEN® SS



| Library Group | ARUM 3D Dental Solutions HIOSEN-SS | | ARUM 3D Dental Solutions-Ti Base HIOSEN-SS | Analog | |
|-----------------|------------------------------------|--|--|----------------------------|---|
| Library Kit No. | Regular 4.8 (H) | | HIOSEN-SS-R-4.8-H | Ti-Base-HIOSEN-SS-R-4.8-H | ✓ |
| | Regular 4.8 (NH) | | HIOSEN-SS-R-4.8-NH | Ti-Base-HIOSEN-SS-R-4.8-NH | ✓ |
| | Wide 6.0 (H) | | HIOSEN-SS-W-6.0-H | Ti-Base-HIOSEN-SS-W-6.0-H | ✓ |
| | Wide 6.0 (NH) | | HIOSEN-SS-W-6.0-NH | Ti-Base-HIOSEN-SS-W-6.0-NH | ✓ |

HUMANTECH Ratio



| Library Group | ARUM 3D Dental Solutions HUMAN-RATIO | |
|-----------------|--------------------------------------|------------------|
| Library Kit No. | Mini (H) | HUMAN-RATIO-M-H |
| | Mini (NH) | HUMAN-RATIO-M-NH |
| | Standard (H) | HUMAN-RATIO-R-H |
| | Standard (NH) | HUMAN-RATIO-R-NH |
| | Large (H) | HUMAN-RATIO-L-H |
| | Large (NH) | HUMAN-RATIO-L-NH |

IMPLANT DIRECT® INTER_ACTIVE/SWISH_ACTIVE



| Library Group | ARUM 3D Dental Solutions IMP-DIR-ACT | | Analog |
|-----------------|--|--|--------|
| Library Kit No. | INTER_ACTIVE 3.0 (H)/SWISH_ACTIVE 3.3 (H) | IMP-DIR-INT-ACT-3.0-SWI-ACT-3.3-H | ✓ |
| | INTER_ACTIVE 3.0 (H)/SWISH_ACTIVE 3.3 (NH) | IMP-DIR-INT-ACT-3.0-SWI-ACT-3.3-NH | ✓ |
| | INTER_ACTIVE 3.4 (H)/SWISH_ACTIVE 4.1/4.8 (H) | IMP-DIR-INT-ACT-3.4-SWI-ACT-4.1_4.8-H | ✓ |
| | INTER_ACTIVE 3.4 (H)/SWISH_ACTIVE 4.1/4.8 (NH) | IMP-DIR-INT-ACT-3.4-SWI-ACT-4.1_4.8-NH | ✓ |

IMPLANT DIRECT® Legacy™



| Library Group | ARUM 3D Dental Solutions IMP-DIR-LEG | | ARUM 3D Dental Solutions-Ti Base IMP-DIR-LEG | Analog | |
|-----------------|--------------------------------------|--|--|----------------------------|---|
| Library Kit No. | 3.0 (H) | | IMP-DIR-LEG-3.0-H | Ti-Base-IMP-DIR-LEG-3.0-H | ✓ |
| | 3.0 (NH) | | IMP-DIR-LEG-3.0-NH | Ti-Base-IMP-DIR-LEG-3.0-NH | ✓ |
| | 3.5 (H) | | IMP-DIR-LEG-3.5-H | Ti-Base-IMP-DIR-LEG-3.5-H | ✓ |
| | 3.5 (NH) | | IMP-DIR-LEG-3.5-NH | Ti-Base-IMP-DIR-LEG-3.5-NH | ✓ |
| | 4.5 (H) | | IMP-DIR-LEG-4.5-H | Ti-Base-IMP-DIR-LEG-4.5-H | ✓ |
| | 4.5 (NH) | | IMP-DIR-LEG-4.5-NH | Ti-Base-IMP-DIR-LEG-4.5-NH | ✓ |
| | 5.7 (H) | | IMP-DIR-LEG-5.7-H | Ti-Base-IMP-DIR-LEG-5.7-H | ✓ |
| | 5.7 (NH) | | IMP-DIR-LEG-5.7-NH | Ti-Base-IMP-DIR-LEG-5.7-NH | ✓ |

IMPLANT DIRECT® MULTI



| Library Group | ARUM 3D Dental Solutions IMP-DIR-MULTI | |
|-----------------|--|---------------|
| Library Kit No. | MULTI | IMD-DIR-MULTI |

IMPLANT DIRECT® SWISH



| Library Group | ARUM 3D Dental Solutions IMP-DIR-SWISH | | Analog |
|-----------------|--|-------------------------|--------|
| Library Kit No. | PLUS 4.8 (H) | IMP-DIR-SWISH-PL-4.8-H | ✓ |
| | PLUS 4.8 (NH) | IMP-DIR-SWISH-PL-4.8-NH | ✓ |
| | PLUS 6.5 (H) | IMP-DIR-SWISH-PL-6.5-H | ✓ |
| | PLUS 6.5 (NH) | IMP-DIR-SWISH-PL-6.5-NH | ✓ |

IMPLANT DIRECT® TRI



| Library Group | ARUM 3D Dental Solutions IMP-DIR-TRI-LOB | | Analog |
|-----------------|--|------------------------|--------|
| Library Kit No. | LOBE 3.5 (H) | IMP-DIR-TRI-LOB-3.5-H | ✓ |
| | LOBE 3.5 (NH) | IMP-DIR-TRI-LOB-3.5-NH | ✓ |
| | LOBE 4.3 (H) | IMP-DIR-TRI-LOB-4.3-H | ✓ |
| | LOBE 4.3 (NH) | IMP-DIR-TRI-LOB-4.3-NH | ✓ |
| | LOBE 5.0 (H) | IMP-DIR-TRI-LOB-5.0-H | ✓ |
| | LOBE 5.0 (NH) | IMP-DIR-TRI-LOB-5.0-NH | ✓ |

IMPLANT SWISS Bone Level



| Library Group | ARUM 3D Dental Solutions IMP-SWIS-B-L | |
|-----------------|---------------------------------------|-----------------------------|
| Library Kit No. | 3.3/3.7 (H) | IMP-SWIS-B-L-3.3_3.7-H |
| | 3.3/3.7 (NH) | IMP-SWIS-B-L-3.3_3.7-NH |
| | 4.3/4.8/5.5 (H) | IMP-SWIS-B-L-4.3_4.8_5.5-H |
| | 4.3/4.8/5.5 (NH) | IMP-SWIS-B-L-4.3_4.8_5.5-NH |

IMPLANT SWISS MULTI



Pre-mill & Disk

| | | |
|-----------------|-------|---|
| Library Group | | ARUM 3D Dental Solutions IMP-SWIS-MULTI |
| Library Kit No. | MULTI | IMP-SWIS-MULTI |

INTRA LOCK IL_Gold & Blue



Pre-mill & Disk

| | | |
|-----------------|---------|-------------------------------------|
| Library Group | | ARUM 3D Dental Solutions INT-IL-G&B |
| Library Kit No. | ST (H) | INT-IL-G&B-ST-H |
| | ST (NH) | INT-IL-G&B-ST-NH |
| | W (H) | INT-IL-G&B-W-H |
| | W (NH) | INT-IL-G&B-W-NH |

IPD MULTI



Pre-mill & Disk

| | | |
|-----------------|-------|-------------------------------------|
| Library Group | | ARUM 3D Dental Solutions IP-D-MULTI |
| Library Kit No. | MULTI | IP-D-MULTI |

iRES INTERNAL HEX



Pre-mill & Disk

| | | |
|-----------------|----------------------------|--|
| Library Group | | ARUM 3D Dental Solutions i-RES-INT-HEX |
| Library Kit No. | 2.5MM 3.7/4.1/4.7/5.2 (H) | i-RES-INT-HEX-3.7_4.1_4.7_5.2-H |
| | 2.5MM 3.7/4.1/4.7/5.2 (NH) | i-RES-INT-HEX-3.7_4.1_4.7_5.2-NH |

iRES INTERNAL OCTAGON TISSUE LEVEL



Pre-mill & Disk

| | | |
|-----------------|------------------|---|
| Library Group | | ARUM 3D Dental Solutions i-RES-INT-OCT-TISSUE |
| Library Kit No. | 3.7/4.1/4.7 (H) | i-RES-INT-OCT-TISSUE-3.7_4.1_4.7-H |
| | 3.7/4.1/4.7 (NH) | i-RES-INT-OCT-TISSUE-3.7_4.1_4.7-NH |

iRES MULTI



Pre-mill & Disk

| | | |
|-----------------|-------|--------------------------------------|
| Library Group | | ARUM 3D Dental Solutions i-RES-MULTI |
| Library Kit No. | MULTI | i-RES-MULTI |

JD EVOLUTION®



Pre-mill & Disk

| | | |
|-----------------|----------------------|-----------------------------------|
| Library Group | | ARUM 3D Dental Solutions J-D-EVOL |
| Library Kit No. | S (H) | J-D-EVOL-S-H |
| | S (NH) | J-D-EVOL-S-NH |
| | 3.7/4.3/5.0/6.0 (H) | J-D-EVOL-3.7_4.3_5.0_6.0-H |
| | 3.7/4.3/5.0/6.0 (NH) | J-D-EVOL-3.7_4.3_5.0_6.0-NH |

JD EVOLUTION ICON



Pre-mill & Disk



Analog

| | | |
|-----------------|------------------|-----------------------------------|
| Library Group | | ARUM 3D Dental Solutions J-D-ICON |
| Library Kit No. | 3.9/4.3/5.0 (H) | J-D-ICON-3.9_4.3_5.0-H |
| | 3.9/4.3/5.0 (NH) | J-D-ICON-3.9_4.3_5.0-NH |

JD EVOLUTION ICON PLUS



Pre-mill & Disk



Analog

| | | |
|-----------------|------------------|--|
| Library Group | | ARUM 3D Dental Solutions J-D-ICON-PLUS |
| Library Kit No. | 3.7/4.3/5.0 (H) | J-D-ICON-PLUS-3.7_4.3_5.0-H |
| | 3.7/4.3/5.0 (NH) | J-D-ICON-PLUS-3.7_4.3_5.0-NH |

JD EVOLUTION MULTI



Pre-mill & Disk



Analog

| | | |
|-----------------|-------|------------------------------------|
| Library Group | | ARUM 3D Dental Solutions J-D-MULTI |
| Library Kit No. | MULTI | J-D-MULTI |

JD EVOLUTION OCTA



Pre-mill & Disk



Analog

| | | |
|-----------------|----------|-----------------------------------|
| Library Group | | ARUM 3D Dental Solutions J-D-OCTA |
| Library Kit No. | 4.8 (H) | J-D-OCTA-4.8-H |
| | 4.8 (NH) | J-D-OCTA-4.8-NH |
| | 6.5 (H) | J-D-OCTA-6.5-H |
| | 6.5 (NH) | J-D-OCTA-6.5-NH |

JD EVOLUTION PLUS



Pre-mill & Disk



Analog

| | | |
|-----------------|----------------------|--|
| Library Group | | ARUM 3D Dental Solutions J-D-EVOL-PLUS |
| Library Kit No. | 3.7/4.3/5.0/6.0 (H) | J-D-EVOL-PLUS-3.7_4.3_5.0_6.0-H |
| | 3.7/4.3/5.0/6.0 (NH) | J-D-EVOL-PLUS-3.7_4.3_5.0_6.0-NH |

KENTEC®



Pre-mill & Disk



Analog

| | | |
|-----------------|----------|--------------------------------|
| Library Group | | ARUM 3D Dental Solutions KENTE |
| Library Kit No. | SB1 (H) | KENTE-SB1-H |
| | SB1 (NH) | KENTE-SB1-NH |
| | SB2 (H) | KENTE-SB2-H |
| | SB2 (NH) | KENTE-SB2-NH |
| | SB3 (H) | KENTE-SB3-H |
| | SB3 (NH) | KENTE-SB3-NH |

KEYSTONE Prima Connex®



| Library Group | ARUM 3D Dental Solutions KEYSTON-PC | ARUM 3D Dental Solutions-Ti Base KEYSTON-PC | Analog | |
|-----------------|-------------------------------------|---|--------------------------|---|
| Library Kit No. | 3.5 (H) | KEYSTON-PC-3.5-H | Ti-Base-KEYSTON-PC-3.5-H | ✓ |
| | 3.5 (NH) | KEYSTON-PC-3.5-NH | | ✓ |
| | 4.1 (H) | KEYSTON-PC-4.1-H | Ti-Base-KEYSTON-PC-4.1-H | ✓ |
| | 4.1 (NH) | KEYSTON-PC-4.1-NH | | ✓ |
| | 5.0 (H) | KEYSTON-PC-5.0-H | Ti-Base-KEYSTON-PC-5.0-H | ✓ |
| | 5.0 (NH) | KEYSTON-PC-5.0-NH | | ✓ |

KYOCERA® Finesia Bone-level



| Library Group | ARUM 3D Dental Solutions KYO-FIN | |
|-----------------|----------------------------------|------------------------|
| Library Kit No. | 3.7/4.2 (H) | KYO-FIN-B-L-3.7_4.2-H |
| | 3.7/4.2 (NH) | KYO-FIN-B-L-3.7_4.2-NH |
| | 4.7/5.2 (H) | KYO-FIN-B-L-4.7_5.2-H |
| | 4.7/5.2 (NH) | KYO-FIN-B-L-4.7_5.2-NH |

KYOCERA® Poiex



| Library Group | ARUM 3D Dental Solutions KYO-POIEX | ARUM 3D Dental Solutions-Ti Base KYO-POIEX | Analog | |
|-----------------|------------------------------------|--|--------------------------|---|
| Library Kit No. | 3.4 (H) | KYO-POIEX-3.4-H | Ti-Base-KYO-POIEX-3.4-H | |
| | 3.4 (NH) | KYO-POIEX-3.4-NH | Ti-Base-KYO-POIEX-3.4-NH | |
| | 3.7 (H) | KYO-POIEX-3.7-H | Ti-Base-KYO-POIEX-3.7-H | ✓ |
| | 3.7 (NH) | KYO-POIEX-3.7-NH | Ti-Base-KYO-POIEX-3.7-NH | ✓ |
| | 4.2 (H) | KYO-POIEX-4.2-H | Ti-Base-KYO-POIEX-4.2-H | ✓ |
| | 4.2 (NH) | KYO-POIEX-4.2-NH | Ti-Base-KYO-POIEX-4.2-NH | ✓ |
| | 4.7 (H) | KYO-POIEX-4.7-H | Ti-Base-KYO-POIEX-4.7-H | |
| | 4.7 (NH) | KYO-POIEX-4.7-NH | Ti-Base-KYO-POIEX-4.7-NH | |
| | 5.2 (H) | KYO-POIEX-5.2-H | Ti-Base-KYO-POIEX-5.2-H | |
| | 5.2 (NH) | KYO-POIEX-5.2-NH | Ti-Base-KYO-POIEX-5.2-NH | |

LASAK Bioniq®



| Library Group | ARUM 3D Dental Solutions LAS-BIQ | ARUM 3D Dental Solutions-Ti Base LAS-BIQ | Analog | |
|-----------------|----------------------------------|--|--|---|
| Library Kit No. | S3.5/S4.0/S5.0/T4.0/T5.0 (H) | LAS-BIQ-ST-S3.5_S4.0_S5.0_T4.0_T5.0-H | Ti-Base-LAS-BIQ-ST-S3.5_S4.0_S5.0_T4.0_T5.0-H | ✓ |
| | S3.5/S4.0/S5.0/T4.0/T5.0 (NH) | LAS-BIQ-ST-S3.5_S4.0_S5.0_T4.0_T5.0-NH | Ti-Base-LAS-BIQ-ST-S3.5_S4.0_S5.0_T4.0_T5.0-NH | ✓ |

LASAK® MULTI



| Library Group | ARUM 3D Dental Solutions LAS-MULTI | |
|-----------------|------------------------------------|-----------|
| Library Kit No. | MULTI | LAS-MULTI |

LEADER Italia Mores Connection



| Library Group | ARUM 3D Dental Solutions LEADE-ITA | |
|-----------------|------------------------------------|------------------------|
| Library Kit No. | H | LEADE-ITA-MORES-CON-H |
| | NH | LEADE-ITA-MORES-CON-NH |

Medentis Medical® ICX



| Library Group | ARUM 3D Dental Solutions MEDEN-MED-ICX | ARUM 3D Dental Solutions-Ti Base MEDEN-MED-ICX | Analog | |
|-----------------|--|--|---------------------------------------|---|
| Library Kit No. | ACTIVE MASTER 3.3 (H) | MEDEN-MED-ICX-ACT-MAS-3.3-H | | |
| | ACTIVE MASTER 3.3 (NH) | MEDEN-MED-ICX-ACT-MAS-3.3-NH | | |
| | 3.75/4.1/4.8 (H) | MEDEN-MED-ICX-3.75_4.1_4.8-H | Ti-Base-MEDEN-MED-ICX-3.75_4.1_4.8-H | ✓ |
| | 3.75/4.1/4.8 (NH) | MEDEN-MED-ICX-3.75_4.1_4.8-NH | Ti-Base-MEDEN-MED-ICX-3.75_4.1_4.8-NH | ✓ |

Medentis Medical® ICX_MULTI



| Library Group | ARUM 3D Dental Solutions MEDEN-MED-ICX-MULTI | |
|-----------------|--|---------------------|
| Library Kit No. | MULTI | MEDEN-MED-ICX-MULTI |

MEGAGEN® AnyONE



| Library Group | ARUM 3D Dental Solutions MEGA-ANYO | ARUM 3D Dental Solutions-Ti Base MEGA-ANYO | Analog | |
|-----------------|------------------------------------|--|----------------------|---|
| Library Kit No. | H | MEGA-ANYO-H | Ti-Base-MEGA-ANYO-H | ✓ |
| | NH | MEGA-ANYO-NH | Ti-Base-MEGA-ANYO-NH | ✓ |

MEGAGEN® Anyridge



| Library Group | ARUM 3D Dental Solutions MEGA-ANYR | ARUM 3D Dental Solutions-Ti Base MEGA-ANYR | Analog | |
|-----------------|------------------------------------|--|----------------------|---|
| Library Kit No. | H | MEGA-ANYR-H | Ti-Base-MEGA-ANYR-H | ✓ |
| | NH | MEGA-ANYR-NH | Ti-Base-MEGA-ANYR-NH | ✓ |

MEGAGEN® Exfell



| Library Group | ARUM 3D Dental Solutions MEGA-EXF | ARUM 3D Dental Solutions-Ti Base MEGA-EXF | Analog | |
|-----------------|-----------------------------------|---|---------------------|---|
| Library Kit No. | H | MEGA-EXF-H | Ti-Base-MEGA-EXF-H | ✓ |
| | NH | MEGA-EXF-NH | Ti-Base-MEGA-EXF-NH | ✓ |

MEGAGEN® EZ Plus



| Library Group | ARUM 3D Dental Solutions MEGA-EZ | ARUM 3D Dental Solutions-Ti Base MEGA-EZ | Analog | |
|-----------------|----------------------------------|--|------------------------|---|
| Library Kit No. | MINI (H) | MEGA-EZ-M-H | Ti-Base-MEGA-EZ-M-H | ✓ |
| | MINI (NH) | MEGA-EZ-M-NH | Ti-Base-MEGA-EZ-M-NH | ✓ |
| | Regular/Wide (H) | MEGA-EZ-R-W-H | Ti-Base-MEGA-EZ-R-W-H | ✓ |
| | Regular/Wide (NH) | MEGA-EZ-R-W-NH | Ti-Base-MEGA-EZ-R-W-NH | ✓ |

MEGAGEN® Rescue Internal



| Library Group | ARUM 3D Dental Solutions MEGA-RES-INT | ARUM 3D Dental Solutions-Ti Base MEGA-RES-INT | Analog | |
|-----------------|---------------------------------------|---|-------------------------|---|
| Library Kit No. | H | MEGA-RES-INT-H | Ti-Base-MEGA-RES-INT-H | ✓ |
| | NH | MEGA-RES-INT-NH | Ti-Base-MEGA-RES-INT-NH | ✓ |

MEGAGEN® MegaFix



| Library Group | ARUM 3D Dental Solutions MEGA-FIX | ARUM 3D Dental Solutions-Ti Base MEGA-FIX | Analog | |
|-----------------|-----------------------------------|---|---------------------|---|
| Library Kit No. | H | MEGA-FIX-H | Ti-Base-MEGA-FIX-H | ✓ |
| | NH | MEGA-FIX-NH | Ti-Base-MEGA-FIX-NH | ✓ |

MIS® C1



| Library Group | ARUM 3D Dental Solutions MI-S-C1 | ARUM 3D Dental Solutions-Ti Base MI-S-C1 | Analog | |
|-----------------|----------------------------------|--|-----------------------|---|
| Library Kit No. | NARROW (H) | MI-S-C1-NA-H | Ti-Base-MI-S-C1-NA-H | ✓ |
| | NARROW (NH) | MI-S-C1-NA-NH | Ti-Base-MI-S-C1-NA-NH | ✓ |
| | STANDARD (H) | MI-S-C1-ST-H | Ti-Base-MI-S-C1-ST-H | ✓ |
| | STANDARD (NH) | MI-S-C1-ST-NH | Ti-Base-MI-S-C1-ST-NH | ✓ |
| | WIDE (H) | MI-S-C1-W-H | Ti-Base-MI-S-C1-W-H | ✓ |
| | WIDE (NH) | MI-S-C1-W-NH | Ti-Base-MI-S-C1-W-NH | ✓ |

MEGAGEN® MINI



| Library Group | ARUM 3D Dental Solutions MEGA-MINI | ARUM 3D Dental Solutions-Ti Base MEGA-MINI | Analog | |
|-----------------|------------------------------------|--|----------------------|---|
| Library Kit No. | H | MEGA-MINI-H | Ti-Base-MEGA-MINI-H | ✓ |
| | NH | MEGA-MINI-NH | Ti-Base-MEGA-MINI-NH | ✓ |

MIS® Internal Hexagon



| Library Group | ARUM 3D Dental Solutions MI-S-INT | ARUM 3D Dental Solutions-Ti Base MI-S-INT | Analog | |
|-----------------|-----------------------------------|---|------------------------|---|
| Library Kit No. | NARROW 3.3 (H) | MI-S-INT-NA-H | Ti-Base-MI-S-INT-NA-H | ✓ |
| | NARROW 3.3 (NH) | MI-S-INT-NA-NH | Ti-Base-MI-S-INT-NA-NH | ✓ |
| | STANDARD 3.75/4.2 (H) | MI-S-INT-ST-H | Ti-Base-MI-S-INT-ST-H | ✓ |
| | STANDARD 3.75/4.2 (NH) | MI-S-INT-ST-NH | Ti-Base-MI-S-INT-ST-NH | ✓ |
| | WIDE 5.0/6.0 (H) | MI-S-INT-W-H | Ti-Base-MI-S-INT-W-H | ✓ |
| | WIDE 5.0/6.0 (NH) | MI-S-INT-W-NH | Ti-Base-MI-S-INT-W-NH | ✓ |

MEGAGEN® MULTI



| Library Group | ARUM 3D Dental Solutions MEGA-MULTI | Analog | |
|-----------------|-------------------------------------|-----------------------|---|
| Library Kit No. | S-TYPE_4.8_MULTI | MEGA-S-TYPE-4.8-MULTI | |
| | N-TYPE_4.8_MULTI | MEGA-N-TYPE-4.8-MULTI | ✓ |
| | OCTA_4.8_MULTI | MEGA-OCTA-4.8-MULTI | |

MIS® MULTI UNIT SYSTEM STANDARD



| Library Group | ARUM 3D Dental Solutions MI-S-MULTI | |
|-----------------|-------------------------------------|----------------|
| Library Kit No. | STANDARD | MI-S-STN-MULTI |

MIS® MULTI UNIT SYSTEM (NEW)



| Library Group | ARUM 3D Dental Solutions MI-S-NEW-MULTI | |
|-----------------|---|----------------|
| Library Kit No. | NEW | MI-S-NEW-MULTI |

MEGAGEN® Rescue External



| Library Group | ARUM 3D Dental Solutions MEGA-RES-EXT | Analog | |
|-----------------|---------------------------------------|----------------------|---|
| Library Kit No. | D5.0 (H) | MEGA-RES-EXT-D5.0-H | ✓ |
| | D5.0 (NH) | MEGA-RES-EXT-D5.0-NH | ✓ |
| | D6.0 (H) | MEGA-RES-EXT-D6.0-H | ✓ |
| | D6.0 (NH) | MEGA-RES-EXT-D6.0-NH | ✓ |

MSDI Alef-Spiral Internal Hex



| Library Group | ARUM 3D Dental Solutions MSD-AL-INT | |
|-----------------|-------------------------------------|------------------------------------|
| Library Kit No. | 3.5/3.75/4.2/5.0/6.0 (H) | MSD-AL-INT-3.5_3.75_4.2_5.0_6.0-H |
| | 3.5/3.75/4.2/5.0/6.0 (NH) | MSD-AL-INT-3.5_3.75_4.2_5.0_6.0-NH |

NEOTECH®



Pre-mill & Disk



Ti-base



Analog

| Library Group | ARUM 3D Dental Solutions NEO-BIO | ARUM 3D Dental Solutions-Ti Base NEO-BIO | | |
|-----------------|----------------------------------|--|-----------------------------|---|
| Library Kit No. | IS SYSTEM (H) | NEO-BIO-IS-INS-H | Ti-Base-NEO-BIO-IS-INS-H | ✓ |
| | IS SYSTEM (NH) | NEO-BIO-IS-INS-NH | Ti-Base-NEO-BIO-IS-INS-NH | ✓ |
| | IS ACTIVE SCRIP (H) | NEO-BIO-ACT-SCRIP-H | Ti-Base-NEO-BIO-ACT-SCRIP-H | ✓ |
| | IS ACTIVE SCRIP (NH) | NEO-BIO-ACT-SCRIP-NH | | ✓ |
| | IT SYSTEM (H) | NEO-BIO-IT-TL-4.8-H | Ti-Base-NEO-BIO-IT-TL-4.8-H | ✓ |
| | IT SYSTEM (NH) | NEO-BIO-IT-TL-4.8-NH | | ✓ |

NEODENT® CM



Pre-mill & Disk



Ti-base



Analog

| Library Group | ARUM 3D Dental Solutions NEODEN-CM | ARUM 3D Dental Solutions-Ti Base NEODEN-CM | | |
|-----------------|------------------------------------|--|--|---|
| Library Kit No. | 3.5/3.75/4.0/4.3/5.0 (H) | NEODEN-CM-3.5_3.75_4.0_4.3_5.0-H | Ti-Base-NEODEN-CM-3.5_3.75_4.0_4.3_5.0-H | ✓ |
| | 3.5/3.75/4.0/4.3/5.0 (NH) | NEODEN-CM-3.5_3.75_4.0_4.3_5.0-NH | | ✓ |



Pre-mill & Disk



Analog

| Library Group | ARUM 3D Dental Solutions NEODEN-CM-MULTI | | |
|-----------------|--|---------------------------|---|
| Library Kit No. | MICRO CONICAL | NEODEN-CM-MICRO-CON-MULTI | |
| | MINI CONICAL | NEODEN-CM-MINI-CON-MULTI | ✓ |

NEODENT® EXTERNAL



Pre-mill & Disk

| Library Group | ARUM 3D Dental Solutions NEODEN-EXT | | |
|-----------------|-------------------------------------|-------------------|--|
| Library Kit No. | 3.3 (H) | NEODEN-EXT-3.3-H | |
| | 3.3 (NH) | NEODEN-EXT-3.3-NH | |
| | 4.1 (H) | NEODEN-EXT-4.1-H | |
| | 4.1 (NH) | NEODEN-EXT-4.1-NH | |
| | 4.3 (H) | NEODEN-EXT-4.3-H | |
| | 4.3 (NH) | NEODEN-EXT-4.3-NH | |
| | 5.0 (H) | NEODEN-EXT-5.0-H | |
| | 5.0 (NH) | NEODEN-EXT-5.0-NH | |

NEODENT® GM



Pre-mill & Disk



Analog

| Library Group | ARUM 3D Dental Solutions NEODEN-GM | | |
|-----------------|------------------------------------|---------------------------------------|---|
| Library Kit No. | 3.5/3.75/4.0/4.3/5.0/6.0 (H) | NEODEN-GM-3.5_3.75_4.0_4.3_5.0_6.0-H | ✓ |
| | 3.5/3.75/4.0/4.3/5.0/6.0 (NH) | NEODEN-GM-3.5_3.75_4.0_4.3_5.0_6.0-NH | ✓ |

NEODENT GM MULTI



Pre-mill & Disk



Analog

| Library Group | ARUM 3D Dental Solutions NEODEN-GM-MULTI | | |
|-----------------|--|---------------------------|---|
| Library Kit No. | MICRO CONICAL | NEODEN-GM-MICRO-CON-MULTI | |
| | MINI CONICAL | NEODEN-GM-MINI-CON-MULTI | ✓ |



Pre-mill & Disk



Analog

NEOSS PROACTIVE® NEOSS™

| Library Group | ARUM 3D Dental Solutions NEOS-PRO | | |
|-----------------|-----------------------------------|------------------|---|
| Library Kit No. | 3.25 (H) | NEOS-PRO-3.25-H | ✓ |
| | 3.25 (NH) | NEOS-PRO-3.25-NH | ✓ |
| | 3.5 (H) | NEOS-PRO-3.5-H | ✓ |
| | 3.5 (NH) | NEOS-PRO-3.5-NH | ✓ |

NOBEL BIOCARE® Active™



Pre-mill & Disk



Ti-base



Analog

| Library Group | ARUM 3D Dental Solutions NOB-ACT | ARUM 3D Dental Solutions-Ti Base NOB-ACT | | |
|-----------------|----------------------------------|--|-------------------------------|---|
| Library Kit No. | 3.0 (H) | NOB-ACT-3.0-H | Ti-Base-NOB-ACT-3.0-H | ✓ |
| | 3.0 (NH) | NOB-ACT-3.0-NH | Ti-Base-NOB-ACT-3.0-NH | ✓ |
| | NP 3.5 (H) | NOB-ACT-NP-3.5-H | Ti-Base-NOB-ACT-NP-3.5-H | ✓ |
| | NP 3.5 (NH) | NOB-ACT-NP-3.5-NH | Ti-Base-NOB-ACT-NP-3.5-NH | ✓ |
| | RP 4.3/5.0 (H) | NOB-ACT-RP-4.3_5.0-H | Ti-Base-NOB-ACT-RP-4.3_5.0-H | ✓ |
| | RP 4.3/5.0 (NH) | NOB-ACT-RP-4.3_5.0-NH | Ti-Base-NOB-ACT-RP-4.3_5.0-NH | ✓ |
| | WP (H) | NOB-ACT-W-H | Ti-Base-NOB-ACT-W-H | ✓ |
| | WP (NH) | NOB-ACT-W-NH | Ti-Base-NOB-ACT-W-NH | ✓ |

NOBEL BIOCARE® Branemark®



Pre-mill & Disk



Ti-base



Analog

| Library Group | ARUM 3D Dental Solutions NOB-BRA | ARUM 3D Dental Solutions-Ti Base NOB-BRA | | |
|-----------------|----------------------------------|--|---------------------------|---|
| Library Kit No. | NP 3.5 (H) | NOB-BRA-NP-3.5-H | Ti-Base-NOB-BRA-NP-3.5-H | ✓ |
| | NP 3.5 (NH) | NOB-BRA-NP-3.5-NH | Ti-Base-NOB-BRA-NP-3.5-NH | ✓ |
| | RP 4.0 (H) | NOB-BRA-RP-4.0-H | Ti-Base-NOB-BRA-RP-4.0-H | ✓ |
| | RP 4.0 (NH) | NOB-BRA-RP-4.0-NH | Ti-Base-NOB-BRA-RP-4.0-NH | ✓ |
| | WP 5.0 (H) | NOB-BRA-WP-5.0-H | Ti-Base-NOB-BRA-WP-5.0-H | ✓ |
| | WP 5.0 (NH) | NOB-BRA-WP-5.0-NH | Ti-Base-NOB-BRA-WP-5.0-NH | ✓ |

NOBEL BIOCARE® MULTI UNIT



Pre-mill & Disk



Ti-base



Analog

| Library Group | ARUM 3D Dental Solutions NOB-MULTI | ARUM 3D Dental Solutions-Ti Base NOB-MULTI | | |
|-----------------|------------------------------------|--|----------------------------|---|
| Library Kit No. | 4.8 | NOB-4.8-MULTI | Ti-Base-NOB-4.8-MULTI | ✓ |
| | PLUS 4.8 | NOB-PLUS-4.8-MULTI | Ti-Base-NOB-PLUS-4.8-MULTI | ✓ |
| | 6.0 | NOB-6.0-MULTI | Ti-Base-NOB-6.0-MULTI | ✓ |

NOBEL BIOCARE®
Replace Select™



| Library Group | ARUM 3D Dental Solutions NOB-REP | ARUM 3D Dental Solutions-Ti Base NOB-REP | Analog | |
|-----------------|----------------------------------|--|----------------------------|---|
| Library Kit No. | NP 3.5 (H) | NOB-REP-NP-3.5-H | Ti-Base-NOB-REP-NP-3.5-H | ✓ |
| | NP 3.5 (NH) | NOB-REP-NP-3.5-NH | Ti-Base-NOB-REP-NP-3.5-NH | ✓ |
| | RP 4.3 (H) | NOB-REP-RP-4.3-H | Ti-Base-NOB-REP-RP-4.3-H | ✓ |
| | RP 4.3 (NH) | NOB-REP-RP-4.3-NH | Ti-Base-NOB-REP-RP-4.3-NH | ✓ |
| | WP 5.0 (H) | NOB-REP-WP-5.0-H | Ti-Base-NOB-REP-WP-5.0-H | ✓ |
| | WP 5.0 (NH) | NOB-REP-WP-5.0-NH | Ti-Base-NOB-REP-WP-5.0-NH | ✓ |
| | SW 6.0 (H) | NOB-REP-XWP-6.0-H | Ti-Base-NOB-REP-XWP-6.0-H | ✓ |
| | SW 6.0 (NH) | NOB-REP-XWP-6.0-NH | Ti-Base-NOB-REP-XWP-6.0-NH | ✓ |

NORIS INTERNAL HEX



| Library Group | ARUM 3D Dental Solutions NOR-INT | |
|-----------------|----------------------------------|------------|
| Library Kit No. | H | NOR-INT-H |
| | NH | NOR-INT-NH |

NORIS MULTI



| Library Group | ARUM 3D Dental Solutions NOR-MULTI | |
|-----------------|------------------------------------|-----------|
| Library Kit No. | MULTI | NOR-MULTI |

NUCLEOSS™



| Library Group | ARUM 3D Dental Solutions NUCL | |
|-----------------|-------------------------------|-------------|
| Library Kit No. | H | NUCL-OSS-H |
| | NH | NUCL-OSS-NH |

OSSTEM® GS/TS/ET 3



| Library Group | ARUM 3D Dental Solutions OSS-GS-TS | ARUM 3D Dental Solutions-Ti Base OSS-GS-TS | Analog | |
|-----------------|------------------------------------|--|----------------------------|---|
| Library Kit No. | Mini 3.5 (H) | OSS-GS-TS-M-3.5-H | Ti-Base-OSS-GS-TS-M-3.5-H | ✓ |
| | Mini 3.5 (NH) | OSS-GS-TS-M-3.5-NH | Ti-Base-OSS-GS-TS-M-3.5-NH | ✓ |
| | Regular/Ultra-Wide (H) | OSS-GS-TS-R-W-H | Ti-Base-OSS-GS-TS-R-W-H | ✓ |
| | Regular/Ultra-Wide (NH) | OSS-GS-TS-R-W-NH | Ti-Base-OSS-GS-TS-R-W-NH | ✓ |

OSSTEM® MULTI



| Library Group | ARUM 3D Dental Solutions OSS-MULTI | |
|-----------------|------------------------------------|-------------|
| Library Kit No. | M | OSS-M-MULTI |
| | R | OSS-R-MULTI |

OSSTEM® OS_TS_CON



| Library Group | ARUM 3D Dental Solutions OSS-TS-CON-MULTI | |
|-----------------|---|----------------------|
| Library Kit No. | 4.0 | OSS-TS-CON-4.0-MULTI |
| | 5.0 | OSS-TS-CON-5.0-MULTI |
| | 6.0 | OSS-TS-CON-6.0-MULTI |

OSSTEM® SS



| Library Group | ARUM 3D Dental Solutions OSS-SS | ARUM 3D Dental Solutions-Ti Base OSS-SS | Analog | |
|-----------------|---------------------------------|---|-------------------------|---|
| Library Kit No. | Regular 4.8 (H) | OSS-SS-R-4.8-H | Ti-Base-OSS-SS-R-4.8-H | ✓ |
| | Regular 4.8 (NH) | OSS-SS-R-4.8-NH | Ti-Base-OSS-SS-R-4.8-NH | ✓ |
| | Wide 6.0 (H) | OSS-SS-W-6.0-H | Ti-Base-OSS-SS-W-6.0-H | ✓ |
| | Wide 6.0 (NH) | OSS-SS-W-6.0-NH | Ti-Base-OSS-SS-W-6.0-NH | ✓ |

OSSTEM® SS OCTA Regular



| Library Group | ARUM 3D Dental Solutions OSS-SS-OCTA-MULTI | |
|-----------------|--|-----------------------|
| Library Kit No. | MULTI | OSS-SS-OCTA-REG-MULTI |

OSSTEM® US



| Library Group | ARUM 3D Dental Solutions OSS-US | ARUM 3D Dental Solutions-Ti Base OSS-US | Analog | |
|-----------------|---------------------------------|---|-------------------------|---|
| Library Kit No. | Mini 3.5 (H) | OSS-US-M-3.5-H | Ti-Base-OSS-US-M-3.5-H | ✓ |
| | Mini 3.5 (NH) | OSS-US-M-3.5-NH | Ti-Base-OSS-US-M-3.5-NH | ✓ |
| | Regular 4.1 (H) | OSS-US-R-4.1-H | Ti-Base-OSS-US-R-4.1-H | ✓ |
| | Regular 4.1 (NH) | OSS-US-R-4.1-NH | Ti-Base-OSS-US-R-4.1-NH | ✓ |
| | Wide 5.1 (H) | OSS-US-W-5.1-H | Ti-Base-OSS-US-W-5.1-H | ✓ |
| | Wide 5.1 (NH) | OSS-US-W-5.1-NH | Ti-Base-OSS-US-W-5.1-NH | ✓ |

OXY IMPLANT® K1



| Library Group | ARUM 3D Dental Solutions OX-Y-K1-PSK | |
|-----------------|--------------------------------------|--------------------|
| Library Kit No. | REGULAR / PSK STANDARD (H) | OX-Y-K1-PSK-R-S-H |
| | REGULAR / PSK STANDARD (NH) | OX-Y-K1-PSK-R-S-NH |

OXY® MULTI



| Library Group | ARUM 3D Dental Solutions OX-Y-MULTI | |
|-----------------|-------------------------------------|----------------------|
| Library Kit No. | K1/PSK MULTI MINI | OX-Y-K1-PSK-MULTI |
| | FIXO MULTI MINI | OX-Y-FIXO-MINI-MULTI |
| | FIXO MULTI REGULAR | OX-Y-FIXO-REG-MULTI |

PALTOP® INTERNAL HEX



Pre-mill & Disk

| Library Group | | ARUM 3D Dental Solutions PAL-INT |
|-----------------|-------------------|----------------------------------|
| Library Kit No. | 3.25 (H) | PAL-INT-3.25-H |
| | 3.25 (NH) | PAL-INT-3.25-NH |
| | 3.75/4.2/5.0 (H) | PAL-INT-3.75_4.2_5.0-H |
| | 3.75/4.2/5.0 (NH) | PAL-INT-3.75_4.2_5.0-NH |

PHIBO® TSH



Pre-mill & Disk

| Library Group | | ARUM 3D Dental Solutions PHI-TSH |
|-----------------|----------|----------------------------------|
| Library Kit No. | 4.0 (H) | PHI-TSH-4.0-H |
| | 4.0 (NH) | PHI-TSH-4.0-NH |

PLATON® PL



Pre-mill & Disk

| Library Group | | ARUM 3D Dental Solutions PLA-SUB |
|-----------------|----------|----------------------------------|
| Library Kit No. | SUB (H) | PLA-SUB-H |
| | SUB (NH) | PLA-SUB-NH |

Q IMPLANT® QZA



Pre-mill & Disk

| Library Group | | ARUM 3D Dental Solutions Q-IMP-QZA |
|-----------------|----------|------------------------------------|
| Library Kit No. | 3.5 (H) | Q-IMP-QZA-3.5-H |
| | 3.5 (NH) | Q-IMP-QZA-3.5-NH |

REX IMPLANT



Pre-mill & Disk

| Library Group | | ARUM 3D Dental Solutions RE-X-MULTI |
|-----------------|-------|-------------------------------------|
| Library Kit No. | MULTI | RE-X-MULTI |

REX PIEZO IMPLANT® TL 1.8 EXTERNAL



Pre-mill & Disk

| Library Group | | ARUM 3D Dental Solutions RE-X-TL |
|-----------------|----|----------------------------------|
| Library Kit No. | H | RE-X-TL-1.8-H |
| | NH | RE-X-TL-1.8-NH |

SGS DENTAL



Pre-mill & Disk

| Library Group | | ARUM 3D Dental Solutions SG-S-MULTI |
|-----------------|-------|-------------------------------------|
| Library Kit No. | MULTI | SG-S-MULTI |

SGS DENTAL Internal Hexagon



Pre-mill & Disk

| Library Group | | ARUM 3D Dental Solutions SG-S-INT-HEX |
|-----------------|-------------------------------|--|
| Library Kit No. | 3.5/3.75/4.2/4.5/5.0/6.0 (H) | SG-S-INT-HEX-3.5_3.75_4.2_4.5_5.0_6.0-H |
| | 3.5/3.75/4.2/4.5/5.0/6.0 (NH) | SG-S-INT-HEX-3.5_3.75_4.2_4.5_5.0_6.0-NH |

SHINHUNG®



Pre-mill & Disk



Analog

| Library Group | | ARUM 3D Dental Solutions SHIN |
|-----------------|------------------|-------------------------------|
| Library Kit No. | M (H) | SHIN-M-H |
| | M (NH) | SHIN-M-NH |
| | LUNA NP 3.5 (H) | SHIN-RUNA-NP_3.5-H |
| | LUNA NP 3.5 (NH) | SHIN-RUNA-NP_3.5-NH |
| | LUNA RP (H) | SHIN-RUNA-RP-H |
| | LUNA RP (NH) | SHIN-RUNA-RP-NH |

SIC Invent®



Pre-mill & Disk



Ti-base



Analog

| Library Group | | ARUM 3D Dental Solutions SI-C-INV | ARUM 3D Dental Solutions-TI Base SI-C-INV |
|-----------------|----------|-----------------------------------|---|
| Library Kit No. | 3.3 (H) | SI-C-INV-3.3-H | Ti-Base-SI-C-INV-3.3-H |
| | 3.3 (NH) | SI-C-INV-3.3-NH | |
| | 4.2 (H) | SI-C-INV-4.2-H | Ti-Base-SI-C-INV-4.2-H |
| | 4.2 (NH) | SI-C-INV-4.2-NH | |

SIC® MULTI



Pre-mill & Disk

| Library Group | | ARUM 3D Dental Solutions SI-C-MULTI |
|-----------------|-------|-------------------------------------|
| Library Kit No. | MULTI | SI-C-MULTI |

SIN® INTERNAL



Pre-mill & Disk

| Library Group | | ARUM 3D Dental Solutions S-IN-INT |
|-----------------|----|-----------------------------------|
| Library Kit No. | H | S-IN-INT-H |
| | NH | S-IN-INT-NH |

SNUCONE Internal Submerged



Pre-mill & Disk

| Library Group | ARUM 3D Dental Solutions SNUCON-INT | |
|-----------------|-------------------------------------|---|
| Library Kit No. | 3.5 (H) | SNUCON-INT-3.5-H |
| | 3.5 (NH) | SNUCON-INT-3.5-NH |
| | 4.0/4.3/4.8/5.3/5.8/6.3/6.8 (H) | SNUCON-INT-4.0_4.3_4.8_5.3_5.8_6.3_6.8-H |
| | 4.0/4.3/4.8/5.3/5.8/6.3/6.8 (NH) | SNUCON-INT-4.0_4.3_4.8_5.3_5.8_6.3_6.8-NH |

SNUCONE® MULTI



Pre-mill & Disk

| Library Group | ARUM 3D Dental Solutions SNUCON-MULTI | |
|-----------------|---------------------------------------|------------------|
| Library Kit No. | 4.5 | SNUCON-4.5-MULTI |

SOUTHERN IMPLANTS DEEP CONICAL



Pre-mill & Disk



Ti-base



Analog

| Library Group | ARUM 3D Dental Solutions SOU-DEEP-CON | ARUM 3D Dental Solutions-Ti Base SOU-DEEP-CON | | |
|-----------------|---------------------------------------|---|---------------------------------|---|
| Library Kit No. | 3.0 (H) | SOU-DEEP-CON-3.0-H | Ti-Base-SOU-DEEP-CON-3.0-H | ✓ |
| | 3.0 (NH) | SOU-DEEP-CON-3.0-NH | Ti-Base-SOU-DEEP-CON-3.0-NH | ✓ |
| | 3.5/4.0 (H) | SOU-DEEP-CON-3.5_4.0-H | Ti-Base-SOU-DEEP-CON-3.5_4.0-H | ✓ |
| | 3.5/4.0 (NH) | SOU-DEEP-CON-3.5_4.0-NH | Ti-Base-SOU-DEEP-CON-3.5_4.0-NH | ✓ |
| | 4.5/5.0 (H) | SOU-DEEP-CON-4.5_5.0-H | Ti-Base-SOU-DEEP-CON-4.5_5.0-H | ✓ |
| | 4.5/5.0 (NH) | SOU-DEEP-CON-4.5_5.0-NH | Ti-Base-SOU-DEEP-CON-4.5_5.0-NH | ✓ |

SOUTHERN IMPLANTS External



Pre-mill & Disk



Ti-base



Analog

| Library Group | ARUM 3D Dental Solutions SOU-EXT | ARUM 3D Dental Solutions-Ti Base SOU-EXT | | |
|-----------------|----------------------------------|--|-------------------------|---|
| Library Kit No. | 3.25 (H) | SOU-EXT-3.25-H | Ti-Base-SOU-EXT-3.25-H | ✓ |
| | 3.25 (NH) | SOU-EXT-3.25-NH | Ti-Base-SOU-EXT-3.25-NH | ✓ |
| | 4.0 (H) | SOU-EXT-4.0-H | | ✓ |
| | 4.0 (NH) | SOU-EXT-4.0-NH | | ✓ |
| | 5.0 (H) | SOU-EXT-5.0-H | | ✓ |
| | 5.0 (NH) | SOU-EXT-5.0-NH | | ✓ |
| | 6.0 (H) | SOU-EXT-6.0-H | Ti-Base-SOU-EXT-6.0-H | ✓ |
| | 6.0 (NH) | SOU-EXT-6.0-NH | Ti-Base-SOU-EXT-6.0-NH | ✓ |

SOUTHERN IMPLANTS IT Connection



Pre-mill & Disk

| Library Group | ARUM 3D Dental Solutions SOU-IT-CON | |
|-----------------|-------------------------------------|-------------------|
| Library Kit No. | 4.8 (H) | SOU-IT-CON-4.8-H |
| | 4.8 (NH) | SOU-IT-CON-4.8-NH |
| | 6.5 (H) | SOU-IT-CON-6.5-H |
| | 6.5 (NH) | SOU-IT-CON-6.5-NH |

SOUTHERN IMPLANTS M-Series



Pre-mill & Disk



Analog

| Library Group | ARUM 3D Dental Solutions SOU-INT-M-SER | | |
|-----------------|--|------------------|---|
| Library Kit No. | H | SOU-INT-M-SER-H | ✓ |
| | NH | SOU-INT-M-SER-NH | ✓ |

SOUTHERN IMPLANTS MULTI



Pre-mill & Disk



Analog

| Library Group | ARUM 3D Dental Solutions SOU-MULTI | | |
|-----------------|------------------------------------|---------------|---|
| Library Kit No. | 4.8 | SOU-4.8-MULTI | ✓ |
| | 6.0 | SOU-6.0-MULTI | |

SOUTHERN IMPLANTS TRI NEX



Pre-mill & Disk



Analog

| Library Group | ARUM 3D Dental Solutions SOU-TRI-NEX | | |
|-----------------|--------------------------------------|--------------------|---|
| Library Kit No. | 3.5 (H) | SOU-TRI-NEX-3.5-H | ✓ |
| | 3.5 (NH) | SOU-TRI-NEX-3.5-NH | ✓ |
| | 4.3 (H) | SOU-TRI-NEX-4.3-H | ✓ |
| | 4.3 (NH) | SOU-TRI-NEX-4.3-NH | ✓ |
| | 5.0 (H) | SOU-TRI-NEX-5.0-H | ✓ |
| | 5.0 (NH) | SOU-TRI-NEX-5.0-NH | ✓ |
| | 6.0 (H) | SOU-TRI-NEX-6.0-H | ✓ |
| | 6.0 (NH) | SOU-TRI-NEX-6.0-NH | ✓ |

STRAUMANN® ANGLED MULTI



Pre-mill & Disk

| Library Group | ARUM 3D Dental Solutions STR-ANGLED-MULTI | |
|-----------------|---|-----------------------|
| Library Kit No. | NC_Angle 25 | STR-NC-ANGLED25-MULTI |
| | RC_Angle 25 | STR-RC-ANGLED25-MULTI |

STRAUMANN® Bone Level®



Pre-mill & Disk



Ti-base



Analog

| Library Group | ARUM 3D Dental Solutions STR-B-L | ARUM 3D Dental Solutions-Ti Base STR-B-L | | |
|-----------------|----------------------------------|--|-------------------------------|---|
| Library Kit No. | 2.9 SC (H) | STR-B-L-SC-2.9-H | ✓ | |
| | 2.9 SC (NH) | STR-B-L-SC-2.9-NH | ✓ | |
| | 3.3 NC (H) | STR-B-L-NC-3.3-H | Ti-Base-STR-B-L-NC-3.3-H | ✓ |
| | 3.3 NC (NH) | STR-B-L-NC-3.3-NH | Ti-Base-STR-B-L-NC-3.3-NH | ✓ |
| | 4.1/4.8 RC (H) | STR-B-L-RC-4.1_4.8-H | Ti-Base-STR-B-L-RC-4.1_4.8-H | ✓ |
| | 4.1/4.8 RC (NH) | STR-B-L-RC-4.1_4.8-NH | Ti-Base-STR-B-L-RC-4.1_4.8-NH | ✓ |

STRAUMANN® NC_RC MULTI



Pre-mill & Disk



Analog

| Library Group | | ARUM 3D Dental Solutions STR-NC_RC-MULTI | |
|-----------------|---------|--|---|
| Library Kit No. | NC_D3.5 | STR-NC-D3.5-MULTI | ✓ |
| | NC_D4.5 | STR-NC-D4.5-MULTI | ✓ |
| | RC_D4.5 | STR-RC-D4.5-MULTI | ✓ |
| | RC_D6.5 | STR-RC-D6.5-MULTI | ✓ |

STRAUMANN® Screw Retained Abutment®



Pre-mill & Disk



Ti-base



Analog

| Library Group | | ARUM 3D Dental Solutions STR-SRA-MULTI | ARUM 3D Dental Solutions-Ti Base STR-SRA-MULTI |
|-----------------|-----|--|--|
| Library Kit No. | 3.5 | STR-SRA-3.5-MULTI | Ti-Base-STR-SRA-3.5-MULTI |
| | 4.6 | STR-SRA-4.6-MULTI | Ti-Base-STR-SRA-4.6-MULTI |

STRAUMANN® SynOcta®



Pre-mill & Disk



Ti-base



Analog

| Library Group | | ARUM 3D Dental Solutions STR-SynOcta-T-L | ARUM 3D Dental Solutions-Ti Base STR-SynOcta-T-L |
|-----------------|-----------------|--|--|
| Library Kit No. | 3.5(NN) (H) | STR-SynOcta-T-L-NN-3.5-H | Ti-Base-STR-SynOcta-T-L-NN-3.5-H |
| | 3.5(NN) (NH) | STR-SynOcta-T-L-NN-3.5-NH | Ti-Base-STR-SynOcta-T-L-NN-3.5-NH |
| | 3.5(NNC) (H) | STR-SynOcta-T-L-NNC-3.5-H | Ti-Base-STR-SynOcta-T-L-NNC-3.5-H |
| | 3.5(NNC) (NH) | STR-SynOcta-T-L-NNC-3.5-NH | Ti-Base-STR-SynOcta-T-L-NNC-3.5-NH |
| | TL 4.8(RN) (H) | STR-SynOcta-T-L-RN-4.8-H | Ti-Base-STR-SynOcta-T-L-RN-4.8-H |
| | TL 4.8(RN) (NH) | STR-SynOcta-T-L-RN-4.8-NH | Ti-Base-STR-SynOcta-T-L-RN-4.8-NH |
| | TL 6 5(WN) (H) | STR-SynOcta-T-L-WN-6.5-H | Ti-Base-STR-SynOcta-T-L-WN-6.5-H |
| | TL 6 5(WN) (NH) | STR-SynOcta-T-L-WN-6.5-NH | Ti-Base-STR-SynOcta-T-L-WN-6.5-NH |

STRAUMANN® SynOcta MULTI



Pre-mill & Disk

| Library Group | | ARUM 3D Dental Solutions STR-SynOcta-MULTI | |
|-----------------|------------------|--|--|
| Library Kit No. | RN SynOcta MULTI | STR-SynOcta-RN-4.8-MULTI | |
| | WN SynOcta MULTI | STR-SynOcta-WN-6.5-MULTI | |

SWEDEN & MARTINA CSR



Pre-mill & Disk

| Library Group | | ARUM 3D Dental Solutions SWE-MAR-CSR | |
|-----------------|--------------------------|--------------------------------------|--|
| Library Kit No. | Small 3.0/3.5 (H) | SWE-MAR-CSR-SMALL-3.0_3.5-H | |
| | Small 3.0/3.5 (NH) | SWE-MAR-CSR-SMALL-3.0_3.5-NH | |
| | Regular 3.8/4.2/5.0 (H) | SWE-MAR-CSR-REGULAR-3.8_4.2_5.0-H | |
| | Regular 3.8/4.2/5.0 (NH) | SWE-MAR-CSR-REGULAR-3.8_4.2_5.0-NH | |

SWEDEN & MARTINA P.A.D MULTI



Pre-mill & Disk

| Library Group | | ARUM 3D Dental Solutions SWE-MAR-MULTI | |
|-----------------|-------|--|--|
| Library Kit No. | MULTI | SWE-MAR-PAD-MULTI | |

SWEDEN & MARTINA Prama



Pre-mill & Disk



Ti-base



Analog

| Library Group | | ARUM 3D Dental Solutions SWE-MAR-PRA | ARUM 3D Dental Solutions-Ti Base SWE-MAR-PRA |
|-----------------|-----------------------|--------------------------------------|--|
| Library Kit No. | 3.3/3.8/4.25/5.0 (H) | SWE-MAR-PRA-3.3_3.8_4.25_5.0-H | Ti-Base-SWE-MAR-PRA-3.3_3.8_4.25_5.0-H |
| | 3.3/3.8/4.25/5.0 (NH) | SWE-MAR-PRA-3.3_3.8_4.25_5.0-NH | |

SWEDEN & MARTINA Premium Kohno



Pre-mill & Disk



Ti-base



Analog

| Library Group | | ARUM 3D Dental Solutions SWE-MAR-PRE-KOH | ARUM 3D Dental Solutions-Ti Base SWE-MAR-PRE-KOH |
|-----------------|-----------|--|--|
| Library Kit No. | 3.3 (H) | SWE-MAR-PRE-KOH-3.3-H | Ti-Base-SWE-MAR-PRE-KOH-3.3-H |
| | 3.3 (NH) | SWE-MAR-PRE-KOH-3.3-NH | |
| | 3.8 (H) | SWE-MAR-PRE-KOH-3.8-H | Ti-Base-SWE-MAR-PRE-KOH-3.8-H |
| | 3.8 (NH) | SWE-MAR-PRE-KOH-3.8-NH | |
| | 4.25 (H) | SWE-MAR-PRE-KOH-4.25-H | Ti-Base-SWE-MAR-PRE-KOH-4.25-H |
| | 4.25 (NH) | SWE-MAR-PRE-KOH-4.25-NH | |
| | 5.0 (H) | SWE-MAR-PRE-KOH-5.0-H | |
| | 5.0 (NH) | SWE-MAR-PRE-KOH-5.0-NH | |
| | 6.0 (H) | SWE-MAR-PRE-KOH-6.0-H | |
| | 6.0 (NH) | SWE-MAR-PRE-KOH-6.0-NH | |

SWEDEN & MARTINA Premium one



| Library Group | ARUM 3D Dental Solutions SWE-MAR-PRE-ONE | ARUM 3D Dental Solutions-Ti Base SWE-MAR-PRE-ONE | Analog | |
|-----------------|--|--|-------------------------------|---|
| Library Kit No. | 3.3 (H) | SWE-MAR-PRE-ONE-3.3-H | Ti-Base-SWE-MAR-PRE-ONE-3.3-H | ✓ |
| | 3.3 (NH) | SWE-MAR-PRE-ONE-3.3-NH | | ✓ |
| | 3.8 (H) | SWE-MAR-PRE-ONE-3.8-H | Ti-Base-SWE-MAR-PRE-ONE-3.8-H | ✓ |
| | 3.8 (NH) | SWE-MAR-PRE-ONE-3.8-NH | | ✓ |
| | 4.25 (H) | SWE-MAR-PRE-ONE-4.25-H | | |
| | 4.25 (NH) | SWE-MAR-PRE-ONE-4.25-NH | | |
| | 5.0 (H) | SWE-MAR-PRE-ONE-5.0-H | | |
| | 5.0 (NH) | SWE-MAR-PRE-ONE-5.0-NH | | |

TISMART2 INTERNAL



| Library Group | ARUM 3D Dental Solutions TIS-MAR-INT |
|-----------------|--------------------------------------|
| Library Kit No. | 3.5/3.8/4.5/5.0 (H) |
| | 3.5/3.8/4.5/5.0 (NH) |

TITANIUM FIX EXTERNAL



| Library Group | ARUM 3D Dental Solutions TIT-EXT |
|-----------------|----------------------------------|
| Library Kit No. | 3.5/4.1/5.1 (H) |
| | 3.5/4.1/5.1 (NH) |

SWEDEN & MARTINA Shelta



| Library Group | ARUM 3D Dental Solutions SWE-MAR-SHE | ARUM 3D Dental Solutions-Ti Base SWE-MAR-SHE | Analog | |
|-----------------|--------------------------------------|--|---------------------------|---|
| Library Kit No. | 3.8 (H) | SWE-MAR-SHE-3.8-H | Ti-Base-SWE-MAR-SHE-3.8-H | ✓ |
| | 3.8 (NH) | SWE-MAR-SHE-3.8-NH | | ✓ |
| | 4.25 (H) | SWE-MAR-SHE-4.25-H | | |
| | 4.25 (NH) | SWE-MAR-SHE-4.25-NH | | |
| | 5.0 (H) | SWE-MAR-SHE-5.0-H | | |
| | 5.0 (NH) | SWE-MAR-SHE-5.0-NH | | |
| | 6.0 (H) | SWE-MAR-SHE-6.0-H | | |
| | 6.0 (NH) | SWE-MAR-SHE-6.0-NH | | |

TRATE INTERNAL



| Library Group | ARUM 3D Dental Solutions TRAT-INT |
|-----------------|-----------------------------------|
| Library Kit No. | H |
| | NH |

TRI® MULTI



| Library Group | ARUM 3D Dental Solutions TRI-MULTI |
|-----------------|------------------------------------|
| Library Kit No. | MULTI |

THOMMEN SPI®



| Library Group | ARUM 3D Dental Solutions THOMEN-SPI | ARUM 3D Dental Solutions-Ti Base THOMEN-SPI | Analog | |
|-----------------|-------------------------------------|---|--------------------------|---|
| Library Kit No. | 3.5 (H) | THOMEN-SPI-3.5-H | Ti-Base-THOMEN-SPI-3.5-H | ✓ |
| | 3.5 (NH) | THOMEN-SPI-3.5-NH | | ✓ |
| | 4.0 (H) | THOMEN-SPI-4.0-H | Ti-Base-THOMEN-SPI-4.0-H | ✓ |
| | 4.0 (NH) | THOMEN-SPI-4.0-NH | | ✓ |
| | 4.5 (H) | THOMEN-SPI-4.5-H | Ti-Base-THOMEN-SPI-4.5-H | ✓ |
| | 4.5 (NH) | THOMEN-SPI-4.5-NH | | ✓ |
| | 5.0 (H) | THOMEN-SPI-5.0-H | Ti-Base-THOMEN-SPI-5.0-H | ✓ |
| | 5.0 (NH) | THOMEN-SPI-5.0-NH | | ✓ |
| | 6.0 (H) | THOMEN-SPI-6.0-H | Ti-Base-THOMEN-SPI-6.0-H | ✓ |
| | 6.0 (NH) | THOMEN-SPI-6.0-NH | | ✓ |

TRI® OCTA



| Library Group | ARUM 3D Dental Solutions TRI-OCTA | Analog |
|-----------------|-----------------------------------|--------|
| Library Kit No. | H | ✓ |
| | NH | ✓ |

TRI® VENT



| Library Group | ARUM 3D Dental Solutions TRI-VENT |
|-----------------|-----------------------------------|
| Library Kit No. | H |
| | NH |

WARANTEC® Oneplant



| Library Group | ARUM 3D Dental Solutions WAR-ONE | ARUM 3D Dental Solutions-Ti Base WAR-ONE | Analog | |
|-----------------|----------------------------------|--|--------------------|---|
| Library Kit No. | H | WAR-ONE-H | Ti-Base-WAR-ONE-H | ✓ |
| | NH | WAR-ONE-NH | Ti-Base-WAR-ONE-NH | ✓ |

ZIACOM®



| Library Group | ARUM 3D Dental Solutions ZIACO | | |
|-----------------|--------------------------------|--------------------------|---|
| Library Kit No. | 3.2/3.3 (H) | ZIACO-3.2_3.3-H | |
| | 3.2/3.3 (NH) | ZIACO-3.2_3.3-NH | |
| | 3.5/3.7/4.0/4.3 (H) | ZIACO-3.5_3.7_4.0_4.3-H | ✓ |
| | 3.5/3.7/4.0/4.3 (NH) | ZIACO-3.5_3.7_4.0_4.3-NH | ✓ |
| | 4.5/4.6/5.0 (H) | ZIACO-4.5_4.6_5.0-H | ✓ |
| | 4.5/4.6/5.0 (NH) | ZIACO-4.5_4.6_5.0-NH | ✓ |

ZIACOM® EXTERNAL



| Library Group | ARUM 3D Dental Solutions ZIACO-EXT | | |
|-----------------|------------------------------------|-----------------|--|
| Library Kit No. | RP (H) | ZIACO-EXT-RP-H | |
| | RP (NH) | ZIACO-EXT-RP-NH | |

ZIMMER® Eztetic



| Library Group | ARUM 3D Dental Solutions ZIMMER-EZT | ARUM 3D Dental Solutions-Ti Base ZIMMER-EZT | Analog | |
|-----------------|-------------------------------------|---|-----------------------------|---|
| Library Kit No. | NP 3.1 (H) | ZIMMER-EZT-NP-3.1-H | Ti-Base-ZIMMER-EZT-NP-3.1-H | ✓ |
| | NP 3.1 (NH) | ZIMMER-EZT-NP-3.1-NH | | ✓ |

ZIMMER® Paragon



| Library Group | ARUM 3D Dental Solutions ZIMMER-PRA | | |
|-----------------|-------------------------------------|---------------|--|
| Library Kit No. | H | ZIMMER-PRA-H | |
| | NH | ZIMMER-PRA-NH | |

ZIMMER® Spline



| Library Group | ARUM 3D Dental Solutions ZIMMER-SPL-AB | ARUM 3D Dental Solutions-Ti Base ZIMMER-SPL-B | Analog | |
|-----------------|--|---|------------------------------|---|
| Library Kit No. | A 3.25 (H) | ZIMMER-SPL-A-3.25-H | | |
| | A 3.25 (NH) | ZIMMER-SPL-A-3.25-NH | | |
| | A 3.75 (H) | ZIMMER-SPL-A-3.75-H | | |
| | A 3.75 (NH) | ZIMMER-SPL-A-3.75-NH | | |
| | A 5.0 (H) | ZIMMER-SPL-A-5.0-H | | |
| | A 5.0 (NH) | ZIMMER-SPL-A-5.0-NH | | |
| | B 3.25 (H) | ZIMMER-SPL-B-3.25-H | | ✓ |
| | B 3.25 (NH) | ZIMMER-SPL-B-3.25-NH | Ti-Base-ZIMMER-SPL-B-3.25-NH | ✓ |
| | B 3.75 (H) | ZIMMER-SPL-B-3.75-H | | ✓ |
| | B 3.75 (NH) | ZIMMER-SPL-B-3.75-NH | Ti-Base-ZIMMER-SPL-B-3.75-NH | ✓ |
| | B 5.0 (H) | ZIMMER-SPL-B-5.0-H | | ✓ |
| | B 5.0 (NH) | ZIMMER-SPL-B-5.0-NH | Ti-Base-ZIMMER-SPL-B-5.0-NH | ✓ |

ZIMMER® Swiss Plus



| Library Group | ARUM 3D Dental Solutions ZIMMER-SWISS-PLUS | ARUM 3D Dental Solutions-Ti Base ZIMMER-SWISS-PLUS | Analog | |
|-----------------|--|--|----------------------------------|---|
| Library Kit No. | 4.8 (H) | ZIMMER-SWISS-PLUS-4.8-H | Ti-Base-ZIMMER-SWISS-PLUS-4.8-H | ✓ |
| | 4.8 (NH) | ZIMMER-SWISS-PLUS-4.8-NH | Ti-Base-ZIMMER-SWISS-PLUS-4.8-NH | ✓ |

ZIMMER® Tapered Screw-Vent®



| Library Group | ARUM 3D Dental Solutions ZIMMER-TSV | ARUM 3D Dental Solutions-Ti Base ZIMMER-TSV | Analog | |
|-----------------|-------------------------------------|---|---------------------------|---|
| Library Kit No. | 3.5 (H) | ZIMMER-TSV-3.5-H | Ti-Base-ZIMMER-TSV-3.5-H | ✓ |
| | 3.5 (NH) | ZIMMER-TSV-3.5-NH | Ti-Base-ZIMMER-TSV-3.5-NH | ✓ |
| | 4.5 (H) | ZIMMER-TSV-4.5-H | Ti-Base-ZIMMER-TSV-4.5-H | ✓ |
| | 4.5 (NH) | ZIMMER-TSV-4.5-NH | Ti-Base-ZIMMER-TSV-4.5-NH | ✓ |
| | 5.7 (H) | ZIMMER-TSV-5.7-H | Ti-Base-ZIMMER-TSV-5.7-H | ✓ |
| | 5.7 (NH) | ZIMMER-TSV-5.7-NH | Ti-Base-ZIMMER-TSV-5.7-NH | ✓ |

ZIMMER® Tapered Abutment_SRR_MULTI



| Library Group | ARUM 3D Dental Solutions ZIMMER-SRR-MULTI | | |
|-----------------|---|------------------|--|
| Library Kit No. | MULTI_SRR | ZIMMER-SRR-MULTI | |



Copyright © 2024 Arum Dental. All rights reserved.

All content, including text, images, and graphics, may not be copied, reproduced, or distributed without prior written permission.
For inquiries of permission request, please contact info@arumeurope.com.